

Anti-RAB3IP antibody (257-306 aa) (STJ95311)

STJ95311

GENERAL INFORMATION

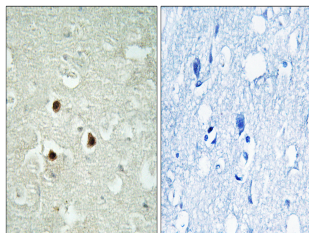
Product Type	Primary antibodies
Short Description	Rabbit polyclonal antibody anti-Rab-3A-interacting protein (257-306 aa) is suitable for use in Western Blot, Immunohistochemistry, Immunofluorescence and ELISA research applications.
Applications	WB/IHC/IF/ELISA
Host/Source	Rabbit
Reactivity	Human/Mouse/Rat

PRODUCT PROPERTIES

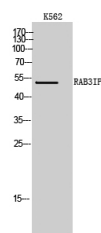
Clonality	Polyclonal
Clone ID	
Concentration	1 mg/mL
Conjugation	Unconjugated
Purification	The antibody was affinity-purified from rabbit antiserum by affinity-chromatography using epitope-specific immunogen.
Dilution Range	WB 1:500-1:2000 IHC 1:100-1:300 ELISA 1:40000 IF 1:50-200
Formulation	Liquid in PBS containing 50% Glycerol, 0.5% BSA and 0.02% Sodium Azide.
Isotype	IgG
Storage Instruction	Store at -20°C for up to 1 year from the date of receipt, and avoid repeat freeze-thaw cycles.

TARGET INFORMATION

Gene ID	117177
Gene Symbol	RAB3IP
Uniprot ID	RAB3I_HUMAN
Immunogen	The antiserum was produced against synthesized peptide derived from the human RAB3IP at the amino acid range 257-306
Immunogen Region	257-306 aa
Specificity	RAB3IP Polyclonal Antibody detects endogenous levels of RAB3IP protein.
Immunogen Sequence	



Immunohistochemistry analysis of paraffin-embedded human brain tissue, using RAB3IP Antibody. The picture on the right is blocked with the synthesized peptide.



Western blot analysis of K562 cells using RAB3IP Polyclonal Antibody

This product is suitable for in-vitro studies under the RESEARCH USE ONLY [RUO] licence. This product must not be used as for diagnostic or other medical purposes.
St John's Laboratory Ltd, Knowledge Dock Business Centre, University Way, London, E16 2RD | Tel: 0208 223 3081