

Anti-RAB18 antibody (103-152 aa) (STJ95285)

STJ95285

GENERAL INFORMATION

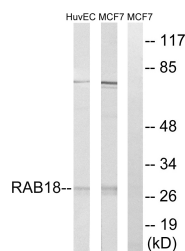
Product Type	Primary antibodies
Short Description	Rabbit polyclonal antibody anti-Ras-related protein Rab-18 (103-152 aa) is suitable for use in Western Blot, ELISA and Immunohistochemistry research applications.
Applications	WB/ELISA/IHC
Host/Source	Rabbit
Reactivity	Human/Mouse/Rat

PRODUCT PROPERTIES

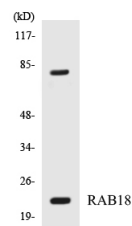
Clonality	Polyclonal
Clone ID	
Concentration	1 mg/mL
Conjugation	Unconjugated
Purification	The antibody was affinity-purified from rabbit antiserum by affinity-chromatography using epitope-specific immunogen.
Dilution Range	WB 1:500-2000 IHC-P 1:50-300 ELISA 2000-20000
Formulation	Liquid in PBS containing 50% Glycerol, 0.5% BSA and 0.02% Sodium Azide.
Isotype	IgG
Storage Instruction	Store at -20°C for up to 1 year from the date of receipt, and avoid repeat freeze-thaw cycles.

TARGET INFORMATION

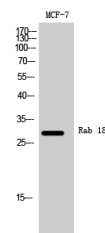
Gene ID	22931
Gene Symbol	RAB18
Uniprot ID	RAB18_HUMAN
Immunogen	The antiserum was produced against synthesized peptide derived from the human RAB18 at the amino acid range 103-152
Immunogen Region	103-152 aa
Specificity	Rab 18 Polyclonal Antibody detects endogenous levels of Rab 18 protein.
Immunogen Sequence	



Western blot analysis of lysates from MCF-7 and HUVEC cells, using RAB18 Antibody. The lane on the right is blocked with the synthesized peptide.



Western blot analysis of the lysates from HepG2 cells using RAB18 antibody.



Western blot analysis of MCF-7 cells using Rab 18 Polyclonal Antibody.