

Anti-PTPN1 antibody (16-65 aa) (STJ95265)

STJ95265

GENERAL INFORMATION

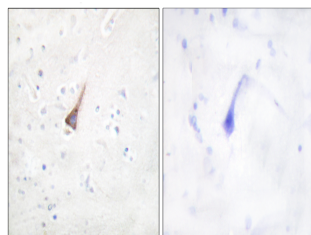
Product Type	Primary antibodies
Short Description	Rabbit polyclonal antibody anti-Tyrosine-protein phosphatase non-receptor type 1 (16-65 aa) is suitable for use in Western Blot, Immunohistochemistry, Immunofluorescence and ELISA research applications.
Applications	WB/IHC/IF/ELISA
Host/Source	Rabbit
Reactivity	Human/Mouse/Rat/Monkey

PRODUCT PROPERTIES

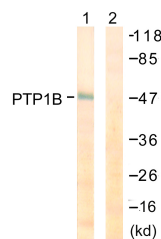
Clonality	Polyclonal
Clone ID	
Concentration	1 mg/mL
Conjugation	Unconjugated
Purification	The antibody was affinity-purified from rabbit antiserum by affinity-chromatography using epitope-specific immunogen.
Dilution	WB 1:500-1:2000
Range	IHC 1:100-1:300 ELISA 1:20000 IF 1:50-200
Formulation	Liquid in PBS containing 50% Glycerol, 0.5% BSA and 0.02% Sodium Azide.
Isotype	IgG
Storage Instruction	Store at -20°C for up to 1 year from the date of receipt, and avoid repeat freeze-thaw cycles.

TARGET INFORMATION

Gene ID	5770
Gene Symbol	PTPN1
Uniprot ID	PTN1_HUMAN
Immunogen	The antiserum was produced against synthesized peptide derived from the human PTP1B at the amino acid range 16-65
Immunogen Region	16-65 aa
Specificity	PTP1B Polyclonal Antibody detects endogenous levels of PTP1B protein.
Immunogen Sequence	



Immunohistochemistry analysis of paraffin-embedded human brain tissue, using PTP1B Antibody. The picture on the right is blocked with the synthesized peptide.



Western blot analysis of lysates from COS7 cells, treated with UV 30', using PTP1B Antibody. The lane on the right is blocked with the synthesized peptide.



Western blot analysis of various cells using PTP1B Polyclonal Antibody diluted at 1/4 500

This product is suitable for in-vitro studies under the RESEARCH USE ONLY [RUO] licence. This product must not be used as for diagnostic or other medical purposes.
St John's Laboratory Ltd, Knowledge Dock Business Centre, University Way, London, E16 2RD | Tel: 0208 223 3081