

Anti-PRSS33 antibody (18-67 aa) (STJ95236)

STJ95236

GENERAL INFORMATION

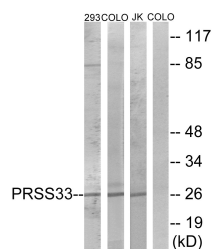
Product Type	Primary antibodies
Short Description	Rabbit polyclonal antibody anti-Serine protease 33 (18-67 aa) is suitable for use in Western Blot, Immunohistochemistry, Immunofluorescence and ELISA research applications.
Applications	WB/IHC/IF/ELISA
Host/Source	Rabbit
Reactivity	Human/Rat/Mouse

PRODUCT PROPERTIES

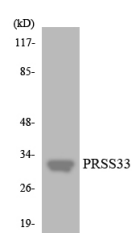
Clonality	Polyclonal
Clone ID	
Concentration	1 mg/mL
Conjugation	Unconjugated
Purification	The antibody was affinity-purified from rabbit antiserum by affinity-chromatography using epitope-specific immunogen.
Dilution Range	WB 1:500-1:2000 IHC 1:100-1:300 ELISA 1:10000 IF 1:50-200
Formulation	Liquid in PBS containing 50% Glycerol, 0.5% BSA and 0.02% Sodium Azide.
Isotype	IgG
Storage Instruction	Store at -20°C for up to 1 year from the date of receipt, and avoid repeat freeze-thaw cycles.

TARGET INFORMATION

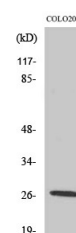
Gene ID	260429
Gene Symbol	PRSS33
Uniprot ID	PRSS33_HUMAN
Immunogen	The antiserum was produced against synthesized peptide derived from the human PRSS33 at the amino acid range 18-67
Immunogen Region	18-67 aa
Specificity	PRSS33 Polyclonal Antibody detects endogenous levels of PRSS33 protein.
Immunogen Sequence	



Western blot analysis of lysates from COLO, 293, and Jurkat cells, using PRSS33 Antibody. The lane on the right is blocked with the synthesized peptide.



Western blot analysis of the lysates from HT-29 cells using PRSS33 antibody.



Western blot analysis of various cells using PRSS33 Polyclonal Antibody.