

Anti-PRPF39 antibody (263-312 aa) (STJ95234)

STJ95234

GENERAL INFORMATION

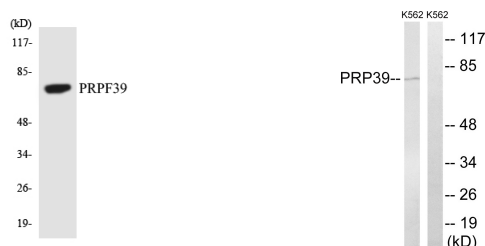
Product Type	Primary antibodies
Short Description	Rabbit polyclonal antibody anti-Pre-mRNA-processing factor 39 (263-312 aa) is suitable for use in Western Blot, Immunohistochemistry, Immunofluorescence and ELISA research applications.
Applications	WB/IHC/IF/ELISA
Host/Source	Rabbit
Reactivity	Human/Mouse

PRODUCT PROPERTIES

Clonality	Polyclonal
Clone ID	
Concentration	1 mg/mL
Conjugation	Unconjugated
Purification	The antibody was affinity-purified from rabbit antiserum by affinity-chromatography using epitope-specific immunogen.
Dilution Range	WB 1:500-1:2000 IHC 1:100-1:300 ELISA 1:40000 IF 1:50-200
Formulation	Liquid in PBS containing 50% Glycerol, 0.5% BSA and 0.02% Sodium Azide.
Isotype	IgG
Storage Instruction	Store at -20°C for up to 1 year from the date of receipt, and avoid repeat freeze-thaw cycles.

TARGET INFORMATION

Gene ID	55015
Gene Symbol	PRPF39
Uniprot ID	PRPF39_HUMAN
Immunogen	The antiserum was produced against synthesized peptide derived from the human PRPF39 at the amino acid range 263-312
Immunogen Region	263-312 aa
Specificity	PRPF39 Polyclonal Antibody detects endogenous levels of PRPF39 protein.
Immunogen Sequence	



Western blot analysis of the lysates from COLO205 cells using PRPF39 antibody.

Western blot analysis of lysates from K562 cells, using PRPF39 Antibody. The lane on the right is blocked with the synthesized peptide.

This product is suitable for in-vitro studies under the RESEARCH USE ONLY [RUO] licence. This product must not be used as for diagnostic or other medical purposes.
St John's Laboratory Ltd, Knowledge Dock Business Centre, University Way, London, E16 2RD | Tel: 0208 223 3081