

## Anti-MAPKAPK5 antibody (148-197 aa) (STJ95213)

STJ95213

### GENERAL INFORMATION

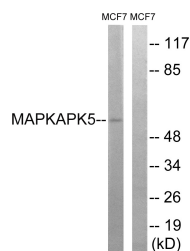
|                          |  |
|--------------------------|--|
| <b>Product Type</b>      | Primary antibodies   |
| <b>Short Description</b> | Rabbit polyclonal antibody anti-MAP kinase-activated protein kinase 5 (148-197 aa) is suitable for use in Western Blot and Immunohistochemistry research applications. |
| <b>Applications</b>      | WB/IHC   |
| <b>Host/Source</b>       | Rabbit   |
| <b>Reactivity</b>        | Human/Mouse  |

### PRODUCT PROPERTIES

|                       |   |
|-----------------------|---|
| <b>Clonality</b>      | Polyclonal  |
| <b>Clone ID</b>       |   |
| <b>Concentration</b>  | 1 mg/mL   |
| <b>Conjugation</b>    | Unconjugated  |
| <b>Purification</b>   | The antibody was affinity-purified from rabbit antiserum by affinity-chromatography using epitope-specific immunogen. |
| <b>Dilution Range</b> | WB 1:500-2000<br>IHC-P 1:50-300   |
| <b>Formulation</b>    | Liquid in PBS containing 50% Glycerol, 0.5% BSA and 0.02% Sodium Azide.   |
| <b>Isotype</b>        | IgG   |
| <b>Storage</b>        | Store at -20°C for up to 1 year from the date of receipt, and avoid repeat freeze-thaw cycles.                        |
| <b>Instruction</b>    |   |

### TARGET INFORMATION

|                           |  |
|---------------------------|--|
| <b>Gene ID</b>            | 8550   |
| <b>Gene Symbol</b>        | MAPKAPK5   |
| <b>Uniprot ID</b>         | MAPK5_HUMAN  |
| <b>Immunogen</b>          | The antiserum was produced against synthesized peptide derived from the human MAPKAPK5 at the amino acid range 148-197 |
| <b>Immunogen Region</b>   | 148-197 aa   |
| <b>Specificity</b>        | PRAK Polyclonal Antibody detects endogenous levels of PRAK protein.  |
| <b>Immunogen Sequence</b> |  |



Western blot analysis of lysates from MCF-7 cells, using MAPKAPK5 Antibody. The lane on the right is blocked with the synthesized peptide.