

Anti-PRAF2 antibody (129-178 aa) (STJ95212)

STJ95212

GENERAL INFORMATION

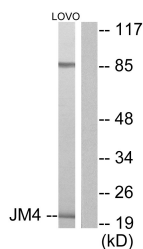
Product Type	Primary antibodies
Short Description	Rabbit polyclonal antibody anti-PRA1 family protein 2 (129-178 aa) is suitable for use in Western Blot, Immunohistochemistry, Immunofluorescence and ELISA research applications.
Applications	WB/IHC/IF/ELISA
Host/Source	Rabbit
Reactivity	Human/Mouse/Rat

PRODUCT PROPERTIES

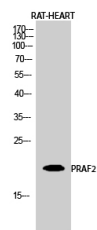
Clonality	Polyclonal
Clone ID	
Concentration	1 mg/mL
Conjugation	Unconjugated
Purification	The antibody was affinity-purified from rabbit antiserum by affinity-chromatography using epitope-specific immunogen.
Dilution Range	WB 1:500-1:2000 IHC 1:100-1:300 IF 1:200-1:1000 ELISA 1:40000
Formulation	Liquid in PBS containing 50% Glycerol, 0.5% BSA and 0.02% Sodium Azide.
Isotype	IgG
Storage Instruction	Store at -20°C for up to 1 year from the date of receipt, and avoid repeat freeze-thaw cycles.

TARGET INFORMATION

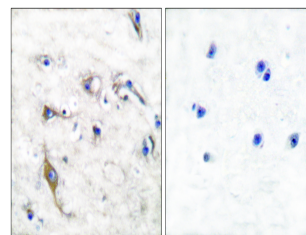
Gene ID	11230
Gene Symbol	PRAF2
Uniprot ID	PRAF2_HUMAN
Immunogen	The antiserum was produced against synthesized peptide derived from the human JM4 at the amino acid range 129-178
Immunogen Region	129-178 aa
Specificity	PRAF2 Polyclonal Antibody detects endogenous levels of PRAF2 protein.
Immunogen Sequence	



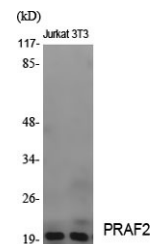
Western blot analysis of lysates from LOVO cells, using JM4 Antibody. The lane on the right is blocked with the synthesized peptide.



Western blot analysis of RAT-HEART cells using PRAF2 Polyclonal Antibody diluted at 1/14 2000



Immunohistochemistry analysis of paraffin-embedded human brain tissue, using JM4 Antibody. The picture on the right is blocked with the synthesized peptide.



Western blot analysis of various cells using PRAF2 Polyclonal Antibody diluted at 1/14 2000

This product is suitable for in-vitro studies under the RESEARCH USE ONLY [RUO] licence. This product must not be used as for diagnostic or other medical purposes.
St John's Laboratory Ltd, Knowledge Dock Business Centre, University Way, London, E16 2RD | Tel: 0208 223 3081