

Anti-PPP4R1L antibody (191-240 aa) (STJ95207)

STJ95207

GENERAL INFORMATION

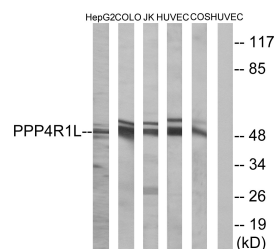
Product Type	Primary antibodies
Short Description	Rabbit polyclonal antibody anti-Putative serine/threonine-protein phosphatase 4 regulatory subunit 1-like (191-240 aa) is suitable for use in Western Blot and ELISA research applications.
Applications	WB/ELISA
Host/Source	Rabbit
Reactivity	Human/Monkey

PRODUCT PROPERTIES

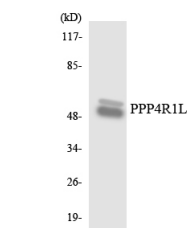
Clonality	Polyclonal
Clone ID	
Concentration	1 mg/mL
Conjugation	Unconjugated
Purification	The antibody was affinity-purified from rabbit antiserum by affinity-chromatography using epitope-specific immunogen.
Dilution Range	WB 1:500-1:2000 ELISA 1:10000
Formulation	Liquid in PBS containing 50% Glycerol, 0.5% BSA and 0.02% Sodium Azide.
Isotype	IgG
Storage	Store at -20°C for up to 1 year from the date of receipt, and avoid repeat freeze-thaw cycles.
Instruction	

TARGET INFORMATION

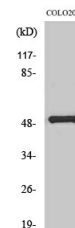
Gene ID	
Gene Symbol	PPP4R1L
Uniprot ID	P44RL_HUMAN
Immunogen	The antiserum was produced against synthesized peptide derived from the human PPP4R1L at the amino acid range 191-240
Immunogen Region	191-240 aa
Specificity	PPP4R1L Polyclonal Antibody detects endogenous levels of PPP4R1L protein.
Immunogen Sequence	



Western blot analysis of lysates from COLO, HUVEC, HepG2, Jurkat, and COS cells, using PPP4R1L Antibody. The lane on the right is blocked with the synthesized peptide.



Western blot analysis of the lysates from HepG2 cells using PPP4R1L antibody.



Western blot analysis of various cells using PPP4R1L Polyclonal Antibody.