

Anti-PPP1R3A antibody (647-696 aa) (STJ95205)

STJ95205

GENERAL INFORMATION

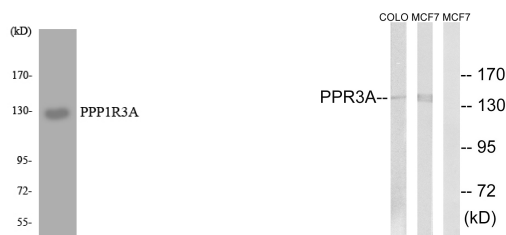
Product Type	Primary antibodies
Short Description	Rabbit polyclonal antibody anti-Protein phosphatase 1 regulatory subunit 3A (647-696 aa) is suitable for use in Western Blot and Immunohistochemistry research applications.
Applications	WB/IHC
Host/Source	Rabbit
Reactivity	Human/Rat/Mouse

PRODUCT PROPERTIES

Clonality	Polyclonal
Clone ID	
Concentration	1 mg/mL
Conjugation	Unconjugated
Purification	The antibody was affinity-purified from rabbit antiserum by affinity-chromatography using epitope-specific immunogen.
Dilution Range	WB 1:500-2000 IHC-P 1:50-300
Formulation	Liquid in PBS containing 50% Glycerol, 0.5% BSA and 0.02% Sodium Azide.
Isotype	IgG
Storage	Store at -20°C for up to 1 year from the date of receipt, and avoid repeat freeze-thaw cycles.
Instruction	

TARGET INFORMATION

Gene ID	5506
Gene Symbol	PPP1R3A
Uniprot ID	PPR3A_HUMAN
Immunogen	The antiserum was produced against synthesized peptide derived from the human PPP1R3A at the amino acid range 647-696
Immunogen Region	647-696 aa
Specificity	PPP1R3A Polyclonal Antibody detects endogenous levels of PPP1R3A protein.
Immunogen Sequence	



Western blot analysis of the lysates from HT-29 cells using PPP1R3A antibody.

Western blot analysis of lysates from MCF-7 and COLO cells, using PPP1R3A Antibody. The lane on the right is blocked with the synthesized peptide.

This product is suitable for in-vitro studies under the RESEARCH USE ONLY [RUO] licence. This product must not be used as for diagnostic or other medical purposes.
St John's Laboratory Ltd, Knowledge Dock Business Centre, University Way, London, E16 2RD | Tel: 0208 223 3081