

Anti-PPM1K antibody (205-254 aa) (STJ95197)

STJ95197

GENERAL INFORMATION

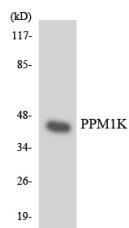
Product Type	Primary antibodies
Short Description	Rabbit polyclonal antibody anti-Protein phosphatase 1K, mitochondrial (205-254 aa) is suitable for use in Western Blot, Immunohistochemistry, Immunofluorescence and ELISA research applications.
Applications	WB/IHC/IF/ELISA
Host/Source	Rabbit
Reactivity	Human/Rat/Mouse

PRODUCT PROPERTIES

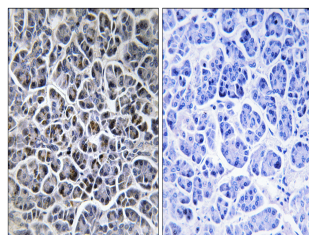
Clonality	Polyclonal
Clone ID	
Concentration	1 mg/mL
Conjugation	Unconjugated
Purification	The antibody was affinity-purified from rabbit antiserum by affinity-chromatography using epitope-specific immunogen.
Dilution	WB 1:500-1:2000
Range	IHC 1:100-1:300 ELISA 1:40000 IF 1:50-200
Formulation	Liquid in PBS containing 50% Glycerol, 0.5% BSA and 0.02% Sodium Azide.
Isotype	IgG
Storage Instruction	Store at -20°C for up to 1 year from the date of receipt, and avoid repeat freeze-thaw cycles.

TARGET INFORMATION

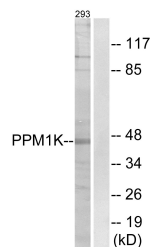
Gene ID	152926
Gene Symbol	PPM1K
Uniprot ID	PPM1K_HUMAN
Immunogen	The antiserum was produced against synthesized peptide derived from the human PPM1K at the amino acid range 205-254
Immunogen Region	205-254 aa
Specificity	PP2C Kappa Polyclonal Antibody detects endogenous levels of PP2C Kappa protein.
Immunogen Sequence	



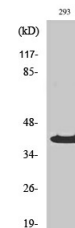
Western blot analysis of the lysates from HeLa cells using PPM1K antibody.



Immunohistochemistry analysis of paraffin-embedded human pancreas tissue, using PPM1K Antibody. The picture on the right is blocked with the synthesized peptide.



Western blot analysis of lysates from 293 cells, using PPM1K Antibody. The lane on the right is blocked with the synthesized peptide.



Western blot analysis of various cells using PP2C Kappa Polyclonal Antibody