

Anti-PPP2R1B antibody (552-601 aa) (STJ95191)

STJ95191

GENERAL INFORMATION

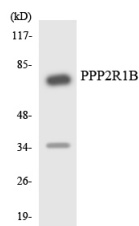
Product Type	Primary antibodies
Short Description	Rabbit polyclonal antibody anti-Serine/threonine-protein phosphatase 2A 65 kDa regulatory subunit A beta isoform (552-601 aa) is suitable for use in Western Blot, Immunohistochemistry, Immunofluorescence and ELISA research applications.
Applications	WB/IHC/IF/ELISA
Host/Source	Rabbit
Reactivity	Human/Mouse/Rat

PRODUCT PROPERTIES

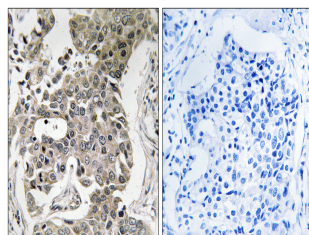
Clonality	Polyclonal
Clone ID	
Concentration	1 mg/mL
Conjugation	Unconjugated
Purification	The antibody was affinity-purified from rabbit antiserum by affinity-chromatography using epitope-specific immunogen.
Dilution	WB 1:500-1:2000
Range	IHC-P 1:50-300 ELISA 1:20000 IF 1:50-200
Formulation	Liquid in PBS containing 50% Glycerol, 0.5% BSA and 0.02% Sodium Azide.
Isotype	IgG
Storage	Store at -20°C for up to 1 year from the date of receipt, and avoid repeat freeze-thaw cycles.
Instruction	

TARGET INFORMATION

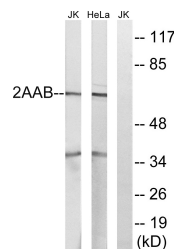
Gene ID	5519
Gene Symbol	PPP2R1B
Uniprot ID	2AAB_HUMAN
Immunogen	The antiserum was produced against synthesized peptide derived from the human PPP2R1B at the amino acid range 552-601
Immunogen	552-601 aa
Region	
Specificity	PP2A-A Beta Polyclonal Antibody detects endogenous levels of PP2A-A Beta protein.
Immunogen	
Sequence	



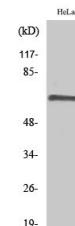
Western blot analysis of the lysates from Jurkat cells using PPP2R1B antibody.



Immunohistochemistry analysis of paraffin-embedded human breast carcinoma tissue, using PPP2R1B Antibody. The picture on the right is blocked with the synthesized peptide.



Western blot analysis of lysates from HeLa and Jurkat cells, using PPP2R1B Antibody. The lane on the right is blocked with the synthesized peptide.



Western blot analysis of various cells using PP2A-A Beta Polyclonal Antibody