

Anti-POTEA antibody (375-424 aa) (STJ95189)

STJ95189

GENERAL INFORMATION

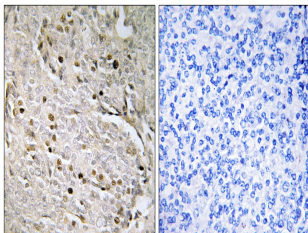
Product Type	Primary antibodies
Short Description	Rabbit polyclonal antibody anti-POTE ankyrin domain family member A (375-424 aa) is suitable for use in Immunohistochemistry, Immunofluorescence and ELISA research applications.
Applications	IHC/IF/ELISA
Host/Source	Rabbit
Reactivity	Human/Rat/Mouse

PRODUCT PROPERTIES

Clonality	Polyclonal
Clone ID	
Concentration	1 mg/mL
Conjugation	Unconjugated
Purification	The antibody was affinity-purified from rabbit antiserum by affinity-chromatography using epitope-specific immunogen.
Dilution Range	IHC 1:100-1:300 ELISA 1:5000 IF 1:50-200
Formulation	Liquid in PBS containing 50% Glycerol, 0.5% BSA and 0.02% Sodium Azide.
Isotype	IgG
Storage Instruction	Store at -20°C for up to 1 year from the date of receipt, and avoid repeat freeze-thaw cycles.

TARGET INFORMATION

Gene ID	340441
Gene Symbol	POTEA
Uniprot ID	POTEA_HUMAN
Immunogen	The antiserum was produced against synthesized peptide derived from the human POTEA at the amino acid range 375-424
Immunogen Region	375-424 aa
Specificity	POTE-8 Polyclonal Antibody detects endogenous levels of POTE-8 protein.
Immunogen Sequence	



Immunohistochemistry analysis of paraffin-embedded human prostate carcinoma, using POTE8 Antibody. The picture on the right is blocked with the synthesized peptide.