

Anti-POTE15 antibody (481-530 aa) (STJ95188)

STJ95188

GENERAL INFORMATION

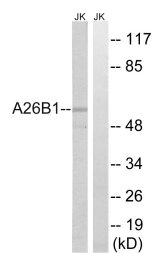
Product Type	Primary antibodies
Short Description	Rabbit polyclonal antibody anti-POTE ankyrin domain family member B3 (481-530 aa) is suitable for use in Western Blot, Immunohistochemistry, Immunofluorescence and ELISA research applications.
Applications	WB/IHC/IF/ELISA
Host/Source	Rabbit
Reactivity	Human/Rat/Mouse

PRODUCT PROPERTIES

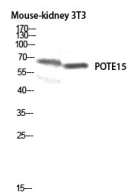
Clonality	Polyclonal
Clone ID	
Concentration	1 mg/mL
Conjugation	Unconjugated
Purification	The antibody was affinity-purified from rabbit antiserum by affinity-chromatography using epitope-specific immunogen.
Dilution	WB 1:500-1:2000
Range	IHC 1:100-1:300 ELISA 1:5000 IF 1:50-200
Formulation	Liquid in PBS containing 50% Glycerol, 0.5% BSA and 0.02% Sodium Azide.
Isotype	IgG
Storage Instruction	Store at -20°C for up to 1 year from the date of receipt, and avoid repeat freeze-thaw cycles.

TARGET INFORMATION

Gene ID	
Gene Symbol	
Uniprot ID	
Immunogen	The antiserum was produced against synthesized peptide derived from the human A26B1 at the amino acid range 481-530
Immunogen Region	481-530 aa
Specificity	POTE15 Polyclonal Antibody detects endogenous levels of POTE15 protein.
Immunogen Sequence	



Western blot analysis of lysates from Jurkat cells, using A26B1 Antibody. The lane on the right is blocked with the synthesized peptide.



Western blot analysis of Mouse-kidney 3T3 lysis using POTE15 antibody. Antibody was diluted at 1:500

This product is suitable for in-vitro studies under the RESEARCH USE ONLY [RUO] licence. This product must not be used as for diagnostic or other medical purposes.
St John's Laboratory Ltd, Knowledge Dock Business Centre, University Way, London, E16 2RD | Tel: 0208 223 3081