

## Anti-POLR3C antibody (191-240 aa) (STJ95180)

STJ95180

### GENERAL INFORMATION

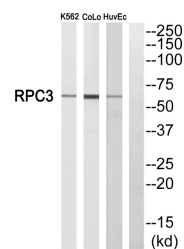
<b>Product Type</b>	Primary antibodies
<b>Short Description</b>	Rabbit polyclonal antibody anti-DNA-directed RNA polymerase III subunit RPC3 (191-240 aa) is suitable for use in Western Blot, ELISA and Immunohistochemistry research applications.
<b>Applications</b>	WB/ELISA/IHC
<b>Host/Source</b>	Rabbit
<b>Reactivity</b>	Human/Rat/Mouse

### PRODUCT PROPERTIES

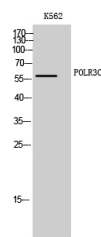
<b>Clonality</b>	Polyclonal
<b>Clone ID</b>	
<b>Concentration</b>	1 mg/mL
<b>Conjugation</b>	Unconjugated
<b>Purification</b>	The antibody was affinity-purified from rabbit antiserum by affinity-chromatography using epitope-specific immunogen.
<b>Dilution Range</b>	WB 1:500-2000 IHC-P 1:50-300 ELISA 2000-20000
<b>Formulation</b>	Liquid in PBS containing 50% Glycerol, 0.5% BSA and 0.02% Sodium Azide.
<b>Isotype</b>	IgG
<b>Storage Instruction</b>	Store at -20°C for up to 1 year from the date of receipt, and avoid repeat freeze-thaw cycles.

### TARGET INFORMATION

<b>Gene ID</b>	10623
<b>Gene Symbol</b>	POLR3C
<b>Uniprot ID</b>	RPC3_HUMAN
<b>Immunogen</b>	The antiserum was produced against synthesized peptide derived from the human RPC3 at the amino acid range 191-240
<b>Immunogen Region</b>	191-240 aa
<b>Specificity</b>	POLR3C Polyclonal Antibody detects endogenous levels of POLR3C protein.
<b>Immunogen Sequence</b>	



Western blot analysis of RPC3 Antibody. The lane on the right is blocked with the RPC3 peptide.



Western blot analysis of K562 cells using POLR3C Polyclonal Antibody cells nucleus extracted by Minute<sup>TM</sup> Cytoplasmic and Nuclear Fractionation kit (SC-003, Inventoriatech, MN, USA).

This product is suitable for in-vitro studies under the RESEARCH USE ONLY [RUO] licence. This product must not be used as for diagnostic or other medical purposes.  
St John's Laboratory Ltd, Knowledge Dock Business Centre, University Way, London, E16 2RD | Tel: 0208 223 3081