

Anti-PMEPA1 antibody (101-150 aa) (STJ95165)

STJ95165

GENERAL INFORMATION

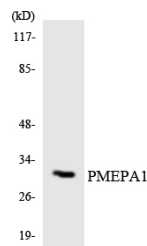
Product Type	Primary antibodies
Short Description	Rabbit polyclonal antibody anti-Protein TMEPAI (101-150 aa) is suitable for use in Western Blot, Immunohistochemistry, Immunofluorescence and ELISA research applications.
Applications	WB/IHC/IF/ELISA
Host/Source	Rabbit
Reactivity	Human/Rat/Mouse

PRODUCT PROPERTIES

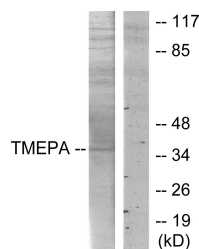
Clonality	Polyclonal
Clone ID	
Concentration	1 mg/mL
Conjugation	Unconjugated
Purification	The antibody was affinity-purified from rabbit antiserum by affinity-chromatography using epitope-specific immunogen.
Dilution Range	WB 1:500-1:2000 IHC 1:100-1:300 IF 1:200-1:1000 ELISA 1:20000
Formulation	Liquid in PBS containing 50% Glycerol, 0.5% BSA and 0.02% Sodium Azide.
Isotype	IgG
Storage Instruction	Store at -20°C for up to 1 year from the date of receipt, and avoid repeat freeze-thaw cycles.

TARGET INFORMATION

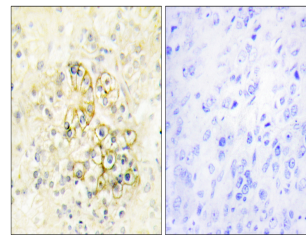
Gene ID	56937
Gene Symbol	PMEPA1
Uniprot ID	PMEPA_HUMAN
Immunogen	The antiserum was produced against synthesized peptide derived from the human TMEPA at the amino acid range 101-150
Immunogen Region	101-150 aa
Specificity	PMEPA1 Polyclonal Antibody detects endogenous levels of PMEPA1 protein.
Immunogen Sequence	



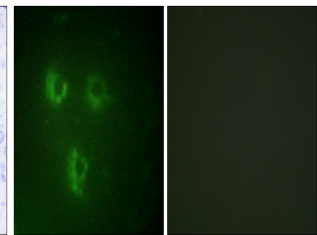
Western blot analysis of the lysates from HeLa cells using PMEPA1 antibody.



Western blot analysis of lysates from HT-29 cells, using TMEPA Antibody. The lane on the right is blocked with the synthesized peptide.



Immunohistochemistry analysis of paraffin-embedded human prostate tissue, using TMEPA Antibody. The picture on the right is blocked with the synthesized peptide.



Immunofluorescence analysis of HUVEC cells, using TMEPA Antibody. The picture on the right is blocked with the synthesized peptide.

This product is suitable for in-vitro studies under the RESEARCH USE ONLY [RUO] licence. This product must not be used as for diagnostic or other medical purposes.
St John's Laboratory Ltd, Knowledge Dock Business Centre, University Way, London, E16 2RD | Tel: 0208 223 3081