

## Anti-PLK1 antibody (176-225 aa) (STJ95162)

STJ95162

### GENERAL INFORMATION

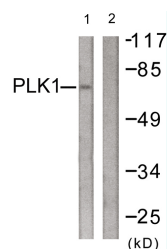
<b>Product Type</b>	Primary antibodies
<b>Short Description</b>	Rabbit polyclonal antibody anti-Serine/threonine-protein kinase PLK1 (176-225 aa) is suitable for use in Western Blot, Immunohistochemistry, Immunofluorescence and ELISA research applications.
<b>Applications</b>	WB/IHC/IF/ELISA
<b>Host/Source</b>	Rabbit
<b>Reactivity</b>	Human/Mouse/Rat

### PRODUCT PROPERTIES

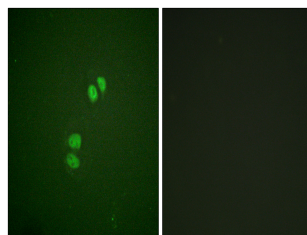
<b>Clonality</b>	Polyclonal
<b>Clone ID</b>	
<b>Concentration</b>	1 mg/mL
<b>Conjugation</b>	Unconjugated
<b>Purification</b>	The antibody was affinity-purified from rabbit antiserum by affinity-chromatography using epitope-specific immunogen.
<b>Dilution</b>	WB 1:500-1:2000
<b>Range</b>	IHC 1:100-1:300 IF 1:200-1:1000 ELISA 1:20000
<b>Formulation</b>	Liquid in PBS containing 50% Glycerol, 0.5% BSA and 0.02% Sodium Azide.
<b>Isotype</b>	IgG
<b>Storage Instruction</b>	Store at -20°C for up to 1 year from the date of receipt, and avoid repeat freeze-thaw cycles.

### TARGET INFORMATION

<b>Gene ID</b>	5347
<b>Gene Symbol</b>	PLK1
<b>Uniprot ID</b>	PLK1_HUMAN
<b>Immunogen</b>	The antiserum was produced against synthesized peptide derived from the human PLK1 at the amino acid range 176-225
<b>Immunogen Region</b>	176-225 aa
<b>Specificity</b>	Plk Polyclonal Antibody detects endogenous levels of Plk protein.
<b>Immunogen Sequence</b>	



Western blot analysis of lysates from LOVO cells, treated with PMA 125ng/ml 30', using PLK1 Antibody. The lane on the right is blocked with the synthesized peptide.



Immunofluorescence analysis of A549 cells, using PLK1 Antibody. The picture on the right is blocked with the synthesized peptide.