

Anti-PLCG1 antibody (736-785 aa) (STJ95157)

STJ95157

GENERAL INFORMATION

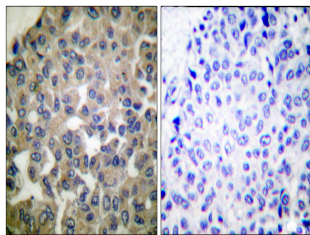
Product Type	Primary antibodies
Short Description	Rabbit polyclonal antibody anti-1-phosphatidylinositol 4, 5-bisphosphate phosphodiesterase gamma-1 (736-785 aa) is suitable for use in Western Blot, Immunohistochemistry, Immunofluorescence and ELISA research applications.
Applications	WB/IHC/IF/ELISA
Host/Source	Rabbit
Reactivity	Human/Mouse/Rat/Monkey

PRODUCT PROPERTIES

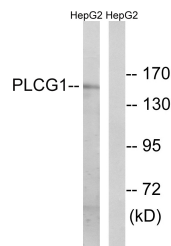
Clonality	Polyclonal
Clone ID	
Concentration	1 mg/mL
Conjugation	Unconjugated
Purification	The antibody was affinity-purified from rabbit antiserum by affinity-chromatography using epitope-specific immunogen.
Dilution Range	WB 1:500-1:2000 IHC 1:100-1:300 ELISA 1:10000 IF 1:50-200
Formulation	Liquid in PBS containing 50% Glycerol, 0.5% BSA and 0.02% Sodium Azide.
Isotype	IgG
Storage Instruction	Store at -20°C for up to 1 year from the date of receipt, and avoid repeat freeze-thaw cycles.

TARGET INFORMATION

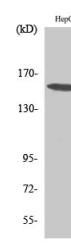
Gene ID	5335
Gene Symbol	PLCG1
Uniprot ID	PLCG1_HUMAN
Immunogen	The antiserum was produced against synthesized peptide derived from the human PLCG1 at the amino acid range 736-785
Immunogen Region	736-785 aa
Specificity	PLC Gamma 1 Polyclonal Antibody detects endogenous levels of PLC Gamma 1 protein.
Immunogen Sequence	



Immunohistochemistry analysis of paraffin-embedded human breast carcinoma tissue, using PLCG1 Antibody. The picture on the right is blocked with the synthesized peptide.



Western blot analysis of lysates from HepG2, using PLCG1 Antibody. The lane on the right is blocked with the synthesized peptide.



Western blot analysis of various cells using PLC Gamma 1 Polyclonal Antibody diluted at 1:1000.