

Anti-PKP4 antibody (185-234 aa) (STJ95150)

STJ95150

GENERAL INFORMATION

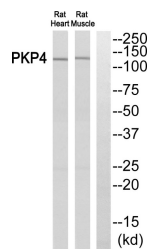
Product Type	Primary antibodies
Short Description	Rabbit polyclonal antibody anti-Plakophilin-4 (185-234 aa) is suitable for use in Western Blot, Immunohistochemistry, Immunofluorescence and ELISA research applications.
Applications	WB/IHC/IF/ELISA
Host/Source	Rabbit
Reactivity	Human/Mouse

PRODUCT PROPERTIES

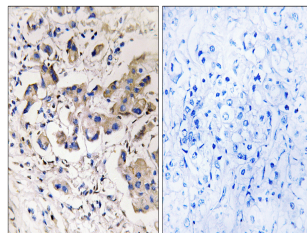
Clonality	Polyclonal
Clone ID	
Concentration	1 mg/mL
Conjugation	Unconjugated
Purification	The antibody was affinity-purified from rabbit antiserum by affinity-chromatography using epitope-specific immunogen.
Dilution Range	WB 1:500-1:2000 IHC 1:100-1:300 ELISA 1:5000 IF 1:50-200
Formulation	Liquid in PBS containing 50% Glycerol, 0.5% BSA and 0.02% Sodium Azide.
Isotype	IgG
Storage	Store at -20°C for up to 1 year from the date of receipt, and avoid repeat freeze-thaw cycles.
Instruction	

TARGET INFORMATION

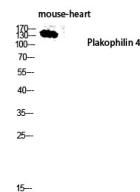
Gene ID	8502
Gene Symbol	PKP4
Uniprot ID	PKP4_HUMAN
Immunogen	The antiserum was produced against synthesized peptide derived from the human PKP4 at the amino acid range 185-234
Immunogen Region	185-234 aa
Specificity	Plakophilin 4 Polyclonal Antibody detects endogenous levels of Plakophilin 4 protein.
Immunogen Sequence	



Western blot analysis of PKP4 Antibody. The lane on the right is blocked with the PKP4 peptide.



Immunohistochemistry analysis of paraffin-embedded human breast carcinoma, using PKP4 Antibody. The lane on the right is blocked with the PKP4 peptide.



Western blot analysis of mouse-heart lysis using Plakophilin 4 antibody. Antibody was diluted at 1:2000