

Anti-PRKCB antibody (622-671 aa) (STJ95121)

STJ95121

GENERAL INFORMATION

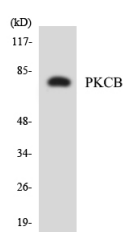
Product Type	Primary antibodies
Short Description	Rabbit polyclonal antibody anti-Protein kinase C beta type (622-671 aa) is suitable for use in Western Blot, Immunohistochemistry, Immunofluorescence and ELISA research applications.
Applications	WB/IHC/IF/ELISA
Host/Source	Rabbit
Reactivity	Human/Mouse/Rat

PRODUCT PROPERTIES

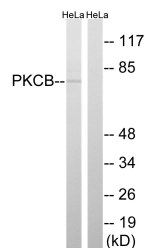
Clonality	Polyclonal
Clone ID	
Concentration	1 mg/mL
Conjugation	Unconjugated
Purification	The antibody was affinity-purified from rabbit antiserum by affinity-chromatography using epitope-specific immunogen.
Dilution Range	WB 1:500-1:2000 ELISA 1:40000 IF 1:50-200
Formulation	Liquid in PBS containing 50% Glycerol, 0.5% BSA and 0.02% Sodium Azide.
Isotype	IgG
Storage Instruction	Store at -20°C for up to 1 year from the date of receipt, and avoid repeat freeze-thaw cycles.

TARGET INFORMATION

Gene ID	5579
Gene Symbol	PRKCB
Uniprot ID	KPCB_HUMAN
Immunogen	The antiserum was produced against synthesized peptide derived from the human PKCB at the amino acid range 622-671
Immunogen Region	622-671 aa
Specificity	PKC Beta Polyclonal Antibody detects endogenous levels of PKC Beta protein.
Immunogen Sequence	



Western blot analysis of the lysates from HepG2 cells using PKCB antibody.



Western blot analysis of lysates from HeLa cells, using PKCB Antibody. The lane on the right is blocked with the synthesized peptide.

This product is suitable for in-vitro studies under the RESEARCH USE ONLY [RUO] licence. This product must not be used as for diagnostic or other medical purposes.
St John's Laboratory Ltd, Knowledge Dock Business Centre, University Way, London, E16 2RD | Tel: 0208 223 3081