

Anti-PRKACB antibody (291-340 aa) (STJ95115)

STJ95115

GENERAL INFORMATION

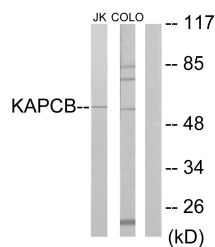
Product Type	Primary antibodies
Short Description	Rabbit polyclonal antibody anti-cAMP-dependent protein kinase catalytic subunit beta (291-340 aa) is suitable for use in Western Blot, Immunohistochemistry, Immunofluorescence and ELISA research applications.
Applications	WB/IHC/IF/ELISA
Host/Source	Rabbit
Reactivity	Human/Mouse/Rat

PRODUCT PROPERTIES

Clonality	Polyclonal
Clone ID	
Concentration	1 mg/mL
Conjugation	Unconjugated
Purification	The antibody was affinity-purified from rabbit antiserum by affinity-chromatography using epitope-specific immunogen.
Dilution	WB 1:500-1:2000
Range	IHC 1:100-1:300 ELISA 1:20000 IF 1:50-200
Formulation	Liquid in PBS containing 50% Glycerol, 0.5% BSA and 0.02% Sodium Azide.
Isotype	IgG
Storage	Store at -20°C for up to 1 year from the date of receipt, and avoid repeat freeze-thaw cycles.
Instruction	

TARGET INFORMATION

Gene ID	5567
Gene Symbol	PRKACB
Uniprot ID	KAPCB_HUMAN
Immunogen	The antiserum was produced against synthesized peptide derived from the human KAPCB at the amino acid range 291-340
Immunogen	291-340 aa
Region	
Specificity	PKA Beta cat Polyclonal Antibody detects endogenous levels of PKA Beta cat protein.
Immunogen	
Sequence	



Western blot analysis of lysates from Jurkat and COLO205 cells, using KAPCB Antibody. The lane on the right is blocked with the synthesized peptide.