

Anti-PI 3-kinase p85 Alpha/Gamma antibody (436-485 aa) (STJ95078)

STJ95078

GENERAL INFORMATION

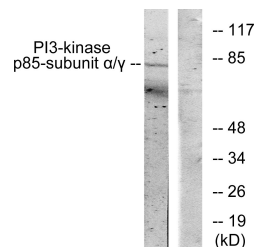
Product Type	Primary antibodies
Short Description	Rabbit polyclonal antibody anti-Phosphatidylinositol 3-kinase regulatory subunit alpha and Phosphatidylinositol 3-kinase regulatory subunit gamma (436-485 aa) is suitable for use in Western Blot, Immunohistochemistry, Immunofluorescence and ELISA res
Applications	WB/IHC/IF/ELISA
Host/Source	Rabbit
Reactivity	Human/Mouse/Rat/Monkey/Chicken

PRODUCT PROPERTIES

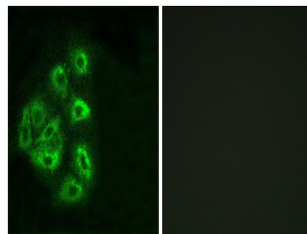
Clonality	Polyclonal
Clone ID	
Concentration	1 mg/mL
Conjugation	Unconjugated
Purification	The antibody was affinity-purified from rabbit antiserum by affinity-chromatography using epitope-specific immunogen.
Dilution	WB 1:500-1:2000
Range	IHC 1:100-1:300 IF 1:200-1:1000 ELISA 1:20000
Formulation	Liquid in PBS containing 50% Glycerol, 0.5% BSA and 0.02% Sodium Azide.
Isotype	IgG
Storage Instruction	Store at -20°C for up to 1 year from the date of receipt, and avoid repeat freeze-thaw cycles.

TARGET INFORMATION

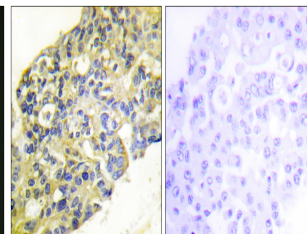
Gene ID	8503 5295
Gene Symbol	PIK3R3 PIK3R1
Uniprot ID	P55G_HUMAN P85A_HUMAN
Immunogen	The antiserum was produced against synthesized peptide derived from the human PI3-kinase p85-alpha/gamma at the amino acid range 436-485
Immunogen Region	436-485 aa
Specificity	PI 3-kinase p85 Alpha/Gamma Polyclonal Antibody detects endogenous levels of PI 3-kinase p85 Alpha/Gamma protein.
Immunogen Sequence	



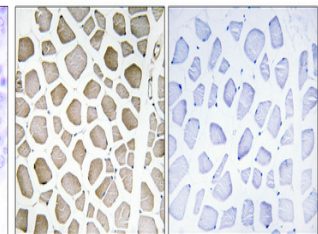
Western blot analysis of lysates from COS7 cells, treated with H₂O₂ 100μM 30', using PI3-kinase p85-alpha/gamma Antibody. The lane on the right is blocked with the synthesized peptide.



Immunofluorescence analysis of HeLa cells, using PI3-kinase p85-alpha/gamma Antibody. The picture on the right is blocked with the synthesized peptide.



Immunohistochemistry analysis of paraffin-embedded human breast carcinoma tissue, using PI3-kinase p85-alpha/gamma Antibody. The picture on the right is blocked with the synthesized peptide.



Immunohistochemical analysis of paraffin-embedded Human skeletal muscle. Antibody was diluted at 1:100 (4Å°C overnight). High-pressure and temperature Tris-EDTA, pH8.0 was used for antigen retrieval. Negative control (right) obtained from antibody was pre-absorbed by immunogen peptide.

This product is suitable for in-vitro studies under the RESEARCH USE ONLY [RUO] licence. This product must not be used as for diagnostic or other medical purposes.
St John's Laboratory Ltd, Knowledge Dock Business Centre, University Way, London, E16 2RD | Tel: 0208 223 3081