

Anti-ABCB1 antibody (534-583 aa) (STJ95057)

STJ95057

GENERAL INFORMATION

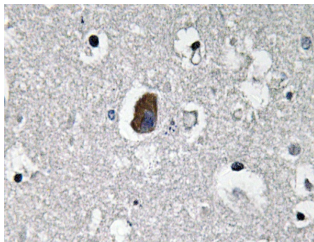
Product Type	Primary antibodies
Short Description	Rabbit polyclonal antibody anti-ATP-dependent translocase ABCB1 (534-583 aa) is suitable for use in Western Blot, Immunohistochemistry, Immunofluorescence and ELISA research applications.
Applications	WB/IHC/IF/ELISA
Host/Source	Rabbit
Reactivity	Human/Mouse/Rat

PRODUCT PROPERTIES

Clonality	Polyclonal
Clone ID	
Concentration	1 mg/mL
Conjugation	Unconjugated
Purification	The antibody was affinity-purified from rabbit antiserum by affinity-chromatography using epitope-specific immunogen.
Dilution Range	WB 1:500-2000 IHC 1:100-1:300 ELISA 1:40000 IF 1:50-200
Formulation	Liquid in PBS containing 50% Glycerol, 0.5% BSA and 0.02% Sodium Azide.
Isotype	IgG
Storage Instruction	Store at -20°C for up to 1 year from the date of receipt, and avoid repeat freeze-thaw cycles.

TARGET INFORMATION

Gene ID	5243
Gene Symbol	ABCB1
Uniprot ID	MDR1_HUMAN
Immunogen	The antiserum was produced against synthesized peptide derived from the human P-glycoprotein 1 at the amino acid range 534-583
Immunogen Region	534-583 aa
Specificity	P-glycoprotein 1 Polyclonal Antibody detects endogenous levels of P-glycoprotein 1 protein.
Immunogen Sequence	



Immunohistochemistry analysis of Mdr-1 antibody in paraffin-embedded human brain tissue.