

Anti-PFKFB2 antibody (451-500 aa) (STJ95046)

STJ95046

GENERAL INFORMATION

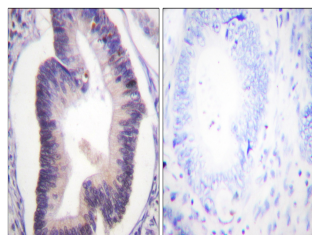
Product Type	Primary antibodies
Short Description	Rabbit polyclonal antibody anti-6-phosphofructo-2-kinase/fructose-2, 6-bisphosphatase 2 (451-500 aa) is suitable for use in Western Blot, Immunohistochemistry, Immunofluorescence and ELISA research applications.
Applications	WB/IHC/IF/ELISA
Host/Source	Rabbit
Reactivity	Human/Mouse/Rat

PRODUCT PROPERTIES

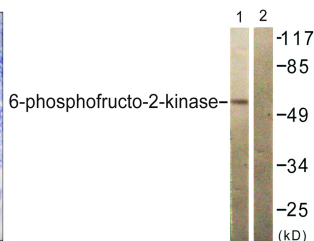
Clonality	Polyclonal
Clone ID	
Concentration	1 mg/mL
Conjugation	Unconjugated
Purification	The antibody was affinity-purified from rabbit antiserum by affinity-chromatography using epitope-specific immunogen.
Dilution	WB 1:500-1:2000
Range	IHC 1:100-1:300 ELISA 1:5000 IF 1:50-200
Formulation	Liquid in PBS containing 50% Glycerol, 0.5% BSA and 0.02% Sodium Azide.
Isotype	IgG
Storage Instruction	Store at -20°C for up to 1 year from the date of receipt, and avoid repeat freeze-thaw cycles.

TARGET INFORMATION

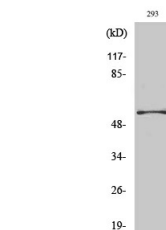
Gene ID	5208
Gene Symbol	PFKFB2
Uniprot ID	F262_HUMAN
Immunogen	The antiserum was produced against synthesized peptide derived from the human PFKFB2 at the amino acid range 451-500
Immunogen Region	451-500 aa
Specificity	PFK-2 car Polyclonal Antibody detects endogenous levels of PFK-2 car protein.
Immunogen Sequence	



Immunohistochemistry analysis of paraffin-embedded human colon carcinoma tissue, using PFKFB2 Antibody. The picture on the right is blocked with the synthesized peptide.



Western blot analysis of lysates from 293 cells, treated with Heat shock, using PFKFB2 Antibody. The lane on the right is blocked with the synthesized peptide.



Western blot analysis of various cells using PFK-2 car Polyclonal Antibody

This product is suitable for in-vitro studies under the RESEARCH USE ONLY [RUO] licence. This product must not be used as for diagnostic or other medical purposes.
St John's Laboratory Ltd, Knowledge Dock Business Centre, University Way, London, E16 2RD | Tel: 0208 223 3081