

Anti-N4BP2L2 antibody (358-407 aa) (STJ95044)

STJ95044

GENERAL INFORMATION

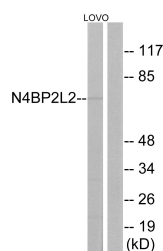
Product Type	Primary antibodies
Short Description	Rabbit polyclonal antibody anti-NEDD4-binding protein 2-like 2 (358-407 aa) is suitable for use in Western Blot, ELISA and Immunohistochemistry research applications.
Applications	WB/ELISA/IHC
Host/Source	Rabbit
Reactivity	Human/Mouse

PRODUCT PROPERTIES

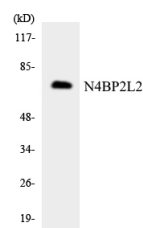
Clonality	Polyclonal
Clone ID	
Concentration	1 mg/mL
Conjugation	Unconjugated
Purification	The antibody was affinity-purified from rabbit antiserum by affinity-chromatography using epitope-specific immunogen.
Dilution Range	WB 1:500-2000 IHC-P 1:50-300 ELISA 2000-20000
Formulation	Liquid in PBS containing 50% Glycerol, 0.5% BSA and 0.02% Sodium Azide.
Isotype	IgG
Storage Instruction	Store at -20°C for up to 1 year from the date of receipt, and avoid repeat freeze-thaw cycles.

TARGET INFORMATION

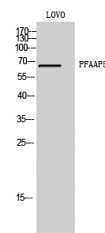
Gene ID	10443
Gene Symbol	N4BP2L2
Uniprot ID	N42L2_HUMAN
Immunogen	The antiserum was produced against synthesized peptide derived from the human N4BP2L2 at the amino acid range 358-407
Immunogen Region	358-407 aa
Specificity	PFAAP5 Polyclonal Antibody detects endogenous levels of PFAAP5 protein.
Immunogen Sequence	



Western blot analysis of lysates from LOVO cells, using N4BP2L2 Antibody. The lane on the right is blocked with the synthesized peptide.



Western blot analysis of the lysates from K562 cells using N4BP2L2 antibody.



Western blot analysis of LOVO cells using PFAAP5 Polyclonal Antibody

This product is suitable for in-vitro studies under the RESEARCH USE ONLY [RUO] licence. This product must not be used as for diagnostic or other medical purposes.
St John's Laboratory Ltd, Knowledge Dock Business Centre, University Way, London, E16 2RD | Tel: 0208 223 3081