

## Anti-SLC15A1 antibody (225-274 aa) (STJ95027)

STJ95027

### GENERAL INFORMATION

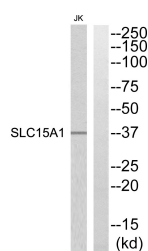
<b>Product Type</b>	Primary antibodies
<b>Short Description</b>	Rabbit polyclonal antibody anti-Solute carrier family 15 member 1/peptide cotransporter (225-274 aa) is suitable for use in Western Blot, ELISA and Immunohistochemistry research applications.
<b>Applications</b>	WB/ELISA/IHC
<b>Host/Source</b>	Rabbit
<b>Reactivity</b>	Human/Mouse/Rat

### PRODUCT PROPERTIES

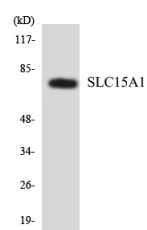
<b>Clonality</b>	Polyclonal
<b>Clone ID</b>	
<b>Concentration</b>	1 mg/mL
<b>Conjugation</b>	Unconjugated
<b>Purification</b>	The antibody was affinity-purified from rabbit antiserum by affinity-chromatography using epitope-specific immunogen.
<b>Dilution Range</b>	WB 1:500-2000 IHC-P 1:50-300 ELISA 2000-20000
<b>Formulation</b>	Liquid in PBS containing 50% Glycerol, 0.5% BSA and 0.02% Sodium Azide.
<b>Isotype</b>	IgG
<b>Storage Instruction</b>	Store at -20°C for up to 1 year from the date of receipt, and avoid repeat freeze-thaw cycles.

### TARGET INFORMATION

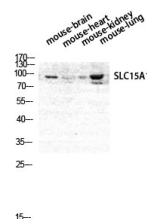
<b>Gene ID</b>	6564
<b>Gene Symbol</b>	SLC15A1
<b>Uniprot ID</b>	S15A1_HUMAN
<b>Immunogen</b>	The antiserum was produced against synthesized peptide derived from the human SLC15A1 at the amino acid range 225-274
<b>Immunogen Region</b>	225-274 aa
<b>Specificity</b>	PEPT1 Polyclonal Antibody detects endogenous levels of PEPT1 protein.
<b>Immunogen Sequence</b>	



Western blot analysis of SLC15A1 Antibody. The lane on the right is blocked with the SLC15A1 peptide.



Western blot analysis of the lysates from HeLa cells using SLC15A1 antibody.



Western blot analysis of mouse brain, mouse heart, mouse kidney, mouse lung cells using PEPT1 Polyclonal Antibody diluted at 1/1000

This product is suitable for in-vitro studies under the RESEARCH USE ONLY [RUO] licence. This product must not be used as for diagnostic or other medical purposes.  
St John's Laboratory Ltd, Knowledge Dock Business Centre, University Way, London, E16 2RD | Tel: 0208 223 3081