

Anti-Pepsin A antibody (258-307 aa) (STJ95025)

STJ95025

GENERAL INFORMATION

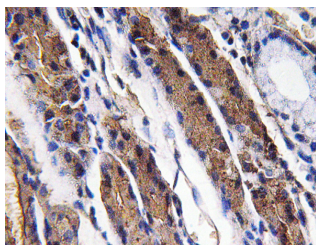
Product Type	Primary antibodies
Short Description	Rabbit polyclonal antibody anti-Pepsin A (258-307 aa) is suitable for use in Western Blot, Immunohistochemistry, Immunofluorescence and ELISA research applications.
Applications	WB/IHC/IF/ELISA
Host/Source	Rabbit
Reactivity	Human/Rat/Mouse

PRODUCT PROPERTIES

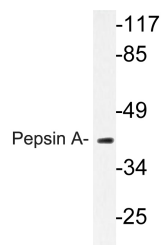
Clonality	Polyclonal
Clone ID	
Concentration	1 mg/mL
Conjugation	Unconjugated
Purification	The antibody was affinity-purified from rabbit antiserum by affinity-chromatography using epitope-specific immunogen.
Dilution Range	WB 1:500-1:2000 IHC 1:100-1:300 ELISA 1:10000 IF 1:50-200
Formulation	Liquid in PBS containing 50% Glycerol, 0.5% BSA and 0.02% Sodium Azide.
Isotype	IgG
Storage Instruction	Store at -20°C for up to 1 year from the date of receipt, and avoid repeat freeze-thaw cycles.

TARGET INFORMATION

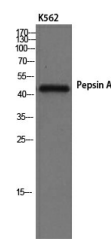
Gene ID	643847 5222
Gene Symbol	PGA4 PGA5
Uniprot ID	PEPA4_HUMAN PEPA5_HUMAN
Immunogen	The antiserum was produced against synthesized peptide derived from the human Pepsin A at the amino acid range 258-307
Immunogen Region	258-307 aa
Specificity	Pepsin A Polyclonal Antibody detects endogenous levels of Pepsin A protein.
Immunogen Sequence	



Immunohistochemistry analysis of Pepsin A antibody in paraffin-embedded human lung carcinoma tissue.



Western blot analysis of lysate from K562 cells, using Pepsin A antibody.



Western blot analysis of K562 cells using Pepsin A Polyclonal Antibody