

## Anti-PDPK1 antibody (210-259 aa) (STJ95010)

STJ95010

### GENERAL INFORMATION

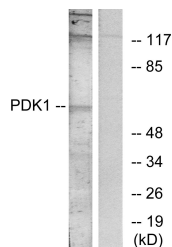
<b>Product Type</b>	Primary antibodies
<b>Short Description</b>	Rabbit polyclonal antibody anti-3-phosphoinositide-dependent protein kinase 1 (210-259 aa) is suitable for use in Immunofluorescence, Western Blot, Immunohistochemistry and ELISA research applications.
<b>Applications</b>	IF/WB/IHC/ELISA
<b>Host/Source</b>	Rabbit
<b>Reactivity</b>	Human/Mouse/Rat

### PRODUCT PROPERTIES

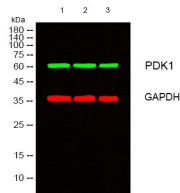
<b>Clonality</b>	Polyclonal
<b>Clone ID</b>	
<b>Concentration</b>	1 mg/mL
<b>Conjugation</b>	Unconjugated
<b>Purification</b>	The antibody was affinity-purified from rabbit antiserum by affinity-chromatography using epitope-specific immunogen.
<b>Dilution</b>	IF 1:50-200
<b>Range</b>	WB 1:500-1:2000 IHC 1:100-1:300 ELISA 1:10000
<b>Formulation</b>	Liquid in PBS containing 50% Glycerol, 0.5% BSA and 0.02% Sodium Azide.
<b>Isotype</b>	IgG
<b>Storage Instruction</b>	Store at -20°C for up to 1 year from the date of receipt, and avoid repeat freeze-thaw cycles.

### TARGET INFORMATION

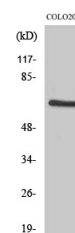
<b>Gene ID</b>	5170
<b>Gene Symbol</b>	PDPK1
<b>Uniprot ID</b>	PDPK1_HUMAN
<b>Immunogen</b>	The antiserum was produced against synthesized peptide derived from the human PDK1 at the amino acid range 210-259
<b>Immunogen</b>	210-259 aa
<b>Region</b>	
<b>Specificity</b>	PDK1 Polyclonal Antibody detects endogenous levels of PDK1 protein.
<b>Immunogen</b>	
<b>Sequence</b>	



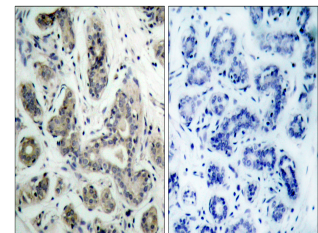
Western blot analysis of lysates from MDA-MB-435 cells, treated with EGF, using PDK1 Antibody. The lane on the right is blocked with the synthesized peptide.



Western blot analysis of lysates from 1) HeLa, 2) COLO, 3) 293T cells, 1/4 Green's primary antibody was diluted at 1:1000, 4A°C over night, secondary antibody (cat: (NA) was diluted at 1:10000, 37A°C 1hour. 1/4 Red's GAPDH monoclonal antibody (2B8) (cat: (STJ96931) antibody was diluted at 1:5000 as loading control, 4A°C over night, secondary antibody (cat: (NA) was diluted at 1:10000, 37A°C 1hour.



Western blot analysis of COLO205 cells using PDK1 Polyclonal Antibody diluted at 1/4 1000



Immunohistochemistry analysis of paraffin-embedded human breast carcinoma tissue, using PDK1 Antibody. The picture on the right is blocked with the synthesized peptide.