

Anti-PDHA1 antibody (314-363 aa) (STJ95006)

STJ95006

GENERAL INFORMATION

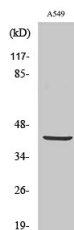
Product Type	Primary antibodies
Short Description	Rabbit polyclonal antibody anti-Pyruvate dehydrogenase E1 component subunit alpha, somatic form, mitochondrial (314-363 aa) is suitable for use in Western Blot, Immunohistochemistry, Immunofluorescence and ELISA research applications.
Applications	WB/IHC/IF/ELISA
Host/Source	Rabbit
Reactivity	Human/Mouse/Rat

PRODUCT PROPERTIES

Clonality	Polyclonal
Clone ID	
Concentration	1 mg/mL
Conjugation	Unconjugated
Purification	The antibody was affinity-purified from rabbit antiserum by affinity-chromatography using epitope-specific immunogen.
Dilution	WB 1:500-1:2000
Range	IHC 1:100-1:300 ELISA 1:40000 IF 1:50-200
Formulation	Liquid in PBS containing 50% Glycerol, 0.5% BSA and 0.02% Sodium Azide.
Isotype	IgG
Storage Instruction	Store at -20°C for up to 1 year from the date of receipt, and avoid repeat freeze-thaw cycles.

TARGET INFORMATION

Gene ID	5160
Gene Symbol	PDHA1
Uniprot ID	ODPA_HUMAN
Immunogen	The antiserum was produced against synthesized peptide derived from the human PDHA1 at the amino acid range 314-363
Immunogen Region	314-363 aa
Specificity	PDHA1 Polyclonal Antibody detects endogenous levels of PDHA1 protein.
Immunogen Sequence	



Western blot analysis of various cells using PDHA1 Polyclonal Antibody diluted at 1:1000