

## Anti-PLD3 antibody (326-375 aa) (STJ94986)

STJ94986

### GENERAL INFORMATION

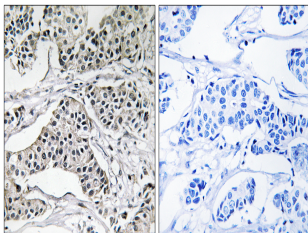
<b>Product Type</b>	Primary antibodies
<b>Short Description</b>	Rabbit polyclonal antibody anti-5 3 exonuclease PLD3 (326-375 aa) is suitable for use in Immunohistochemistry, Immunofluorescence and ELISA research applications.
<b>Applications</b>	IHC/IF/ELISA
<b>Host/Source</b>	Rabbit
<b>Reactivity</b>	Human/Mouse/Rat

### PRODUCT PROPERTIES

<b>Clonality</b>	Polyclonal
<b>Clone ID</b>	
<b>Concentration</b>	1 mg/mL
<b>Conjugation</b>	Unconjugated
<b>Purification</b>	The antibody was affinity-purified from rabbit antiserum by affinity-chromatography using epitope-specific immunogen.
<b>Dilution Range</b>	IHC 1:100-1:300 ELISA 1:5000 IF 1:50-200
<b>Formulation</b>	Liquid in PBS containing 50% Glycerol, 0.5% BSA and 0.02% Sodium Azide.
<b>Isotype</b>	IgG
<b>Storage Instruction</b>	Store at -20°C for up to 1 year from the date of receipt, and avoid repeat freeze-thaw cycles.

### TARGET INFORMATION

<b>Gene ID</b>	23646
<b>Gene Symbol</b>	PLD3
<b>Uniprot ID</b>	PLD3_HUMAN
<b>Immunogen</b>	The antiserum was produced against synthesized peptide derived from the human PLD3 at the amino acid range 326-375
<b>Immunogen Region</b>	326-375 aa
<b>Specificity</b>	PC-PLD3 Polyclonal Antibody detects endogenous levels of PC-PLD3 protein.
<b>Immunogen Sequence</b>	



Immunohistochemistry analysis of paraffin-embedded human breast carcinoma tissue, using PLD3 Antibody. The picture on the right is blocked with the synthesized peptide.