

Anti-PCNA antibody (61-110 aa) (STJ94982)

STJ94982

GENERAL INFORMATION

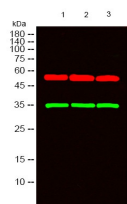
Product Type	Primary antibodies
Short Description	Rabbit polyclonal antibody anti-Proliferating cell nuclear antigen (61-110 aa) is suitable for use in Western Blot, Immunohistochemistry, Immunofluorescence and ELISA research applications.
Applications	WB/IHC/IF/ELISA
Host/Source	Rabbit
Reactivity	Human/Mouse/Rat/Monkey/Rabbit

PRODUCT PROPERTIES

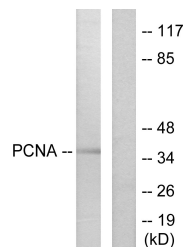
Clonality	Polyclonal
Clone ID	
Concentration	1 mg/mL
Conjugation	Unconjugated
Purification	The antibody was affinity-purified from rabbit antiserum by affinity-chromatography using epitope-specific immunogen.
Dilution Range	WB 1:500-2000 IHC-P 1:100-500 IF ICC 1:100-500 ELISA 1:5000-20000
Formulation	Liquid in PBS containing 50% Glycerol, 0.5% BSA and 0.02% Sodium Azide.
Isotype	IgG
Storage Instruction	Store at -20°C for up to 1 year from the date of receipt, and avoid repeat freeze-thaw cycles.

TARGET INFORMATION

Gene ID	5111
Gene Symbol	PCNA
Uniprot ID	PCNA_HUMAN
Immunogen	The antiserum was produced against synthesized peptide derived from the human PCNA at the amino acid range 61-110
Immunogen	61-110 aa
Region	
Specificity	PCNA Polyclonal Antibody detects endogenous levels of PCNA protein.
Immunogen Sequence	



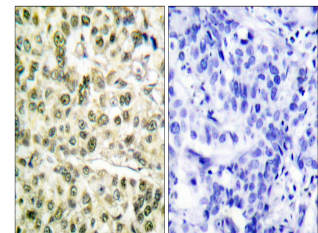
Western blot analysis of lysates from 1) HepG2, 2) HuVEC, 3) COS7 cells. 1%Green/1% primary antibody was diluted at 1:1000, 4A°C over night, secondary antibody (cat: (NA) was diluted at 1:10000, 37A°C 1hour. 1%Red/1% Tubulin Beta monoclonal antibody (5G3) (cat: (STJ96932) antibody was diluted at 1:5000 as loading control, 4A°C over night, secondary antibody (cat: (NA) was diluted at 1:10000, 37A°C 1hour.



Western blot analysis of lysates from HepG2 cells, using PCNA Antibody. The lane on the right is blocked with the synthesized peptide.



Western blot analysis of COS7 cells using PCNA Polyclonal Antibody diluted at 1%2000 cells nucleus extracted by Minute TM Cytoplasmic and Nuclear Fractionation kit (SC-003, Inventibiotec, MN, USA).



Immunohistochemistry analysis of paraffin-embedded human breast carcinoma tissue, using PCNA Antibody. The picture on the right is blocked with the synthesized peptide.

This product is suitable for in-vitro studies under the RESEARCH USE ONLY [RUO] licence. This product must not be used as for diagnostic or other medical purposes.

St John's Laboratory Ltd, Knowledge Dock Business Centre, University Way, London, E16 2RD | Tel: 0208 223 3081