

Anti-PC antibody (357-406 aa) (STJ94981)

STJ94981

GENERAL INFORMATION

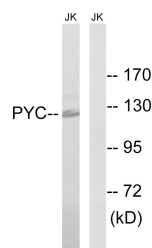
Product Type	Primary antibodies
Short Description	Rabbit polyclonal antibody anti-Pyruvate carboxylase, mitochondrial (357-406 aa) is suitable for use in Western Blot, Immunohistochemistry, Immunofluorescence and ELISA research applications.
Applications	WB/IHC/IF/ELISA
Host/Source	Rabbit
Reactivity	Human/Mouse/Rat

PRODUCT PROPERTIES

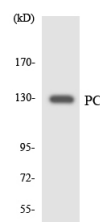
Clonality	Polyclonal
Clone ID	
Concentration	1 mg/mL
Conjugation	Unconjugated
Purification	The antibody was affinity-purified from rabbit antiserum by affinity-chromatography using epitope-specific immunogen.
Dilution Range	WB 1:500-1:2000 IHC-P 1:100-300 ELISA 1:20000 IF 1:100-300
Formulation	Liquid in PBS containing 50% Glycerol, 0.5% BSA and 0.02% Sodium Azide.
Isotype	IgG
Storage Instruction	Store at -20°C for up to 1 year from the date of receipt, and avoid repeat freeze-thaw cycles.

TARGET INFORMATION

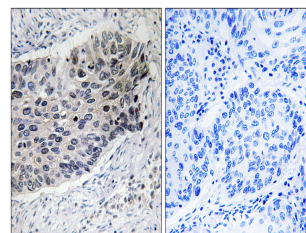
Gene ID	5091
Gene Symbol	PC
Uniprot ID	PYC_HUMAN
Immunogen	The antiserum was produced against synthesized peptide derived from the human PC at the amino acid range 357-406
Immunogen Region	357-406 aa
Specificity	PCB Polyclonal Antibody detects endogenous levels of PCB protein.
Immunogen Sequence	



Western blot analysis of lysates from Jurkat cells, using PC Antibody. The lane on the right is blocked with the synthesized peptide.



Western blot analysis of the lysates from HT-29 cells using PC antibody.



Immunohistochemistry analysis of paraffin-embedded human lung carcinoma tissue, using PC Antibody. The picture on the right is blocked with the synthesized peptide.