

Anti-PBK antibody (1-50 aa) (STJ94976)

STJ94976

GENERAL INFORMATION

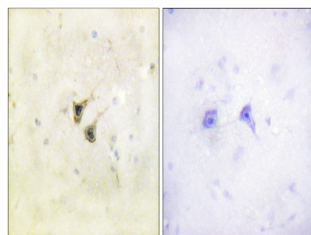
Product Type	Primary antibodies
Short Description	Rabbit polyclonal antibody anti-Lymphokine-activated killer T-cell-originated protein kinase (1-50 aa) is suitable for use in Western Blot, Immunohistochemistry, Immunofluorescence and ELISA research applications.
Applications	WB/IHC/IF/ELISA
Host/Source	Rabbit
Reactivity	Human/Monkey

PRODUCT PROPERTIES

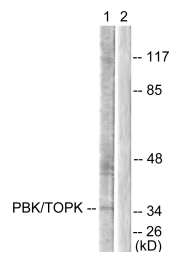
Clonality	Polyclonal
Clone ID	
Concentration	1 mg/mL
Conjugation	Unconjugated
Purification	The antibody was affinity-purified from rabbit antiserum by affinity-chromatography using epitope-specific immunogen.
Dilution	WB 1:500-1:2000
Range	IHC 1:100-1:300 ELISA 1:5000 IF 1:50-200
Formulation	Liquid in PBS containing 50% Glycerol, 0.5% BSA and 0.02% Sodium Azide.
Isotype	IgG
Storage Instruction	Store at -20°C for up to 1 year from the date of receipt, and avoid repeat freeze-thaw cycles.

TARGET INFORMATION

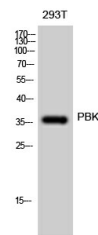
Gene ID	55872
Gene Symbol	PBK
Uniprot ID	TOPK_HUMAN
Immunogen	The antiserum was produced against synthesized peptide derived from the human PBK/TOPK at the amino acid range 1-50
Immunogen Region	1-50 aa
Specificity	PBK Polyclonal Antibody detects endogenous levels of PBK protein.
Immunogen Sequence	



Immunohistochemistry analysis of paraffin-embedded human brain tissue, using PBK/TOPK Antibody. The picture on the right is blocked with the synthesized peptide.



Western blot analysis of lysates from COS7 cells, treated with Nocodazole 1ug/ml 16h, using PBK/TOPK Antibody. The lane on the right is blocked with the synthesized peptide.



Western blot analysis of 293T cells using PBK Polyclonal Antibody diluted at 1:500

This product is suitable for in-vitro studies under the RESEARCH USE ONLY [RUO] licence. This product must not be used as for diagnostic or other medical purposes.
St John's Laboratory Ltd, Knowledge Dock Business Centre, University Way, London, E16 2RD | Tel: 0208 223 3081