

Anti-PAX5 antibody (1-50 aa) (STJ94966)

STJ94966

GENERAL INFORMATION

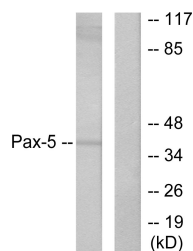
Product Type	Primary antibodies
Short Description	Rabbit polyclonal antibody anti-Paired box protein Pax-5 (1-50 aa) is suitable for use in Western Blot and ELISA research applications.
Applications	WB/ELISA
Host/Source	Rabbit
Reactivity	Human/Mouse

PRODUCT PROPERTIES

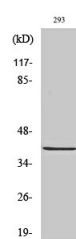
Clonality	Polyclonal
Clone ID	
Concentration	1 mg/mL
Conjugation	Unconjugated
Purification	The antibody was affinity-purified from rabbit antiserum by affinity-chromatography using epitope-specific immunogen.
Dilution Range	WB 1:500-1:2000 ELISA 1:40000
Formulation	Liquid in PBS containing 50% Glycerol, 0.5% BSA and 0.02% Sodium Azide.
Isotype	IgG
Storage Instruction	Store at -20°C for up to 1 year from the date of receipt, and avoid repeat freeze-thaw cycles.

TARGET INFORMATION

Gene ID	5079
Gene Symbol	PAX5
Uniprot ID	PAX5_HUMAN
Immunogen	The antiserum was produced against synthesized peptide derived from the human Pax-5 at the amino acid range 1-50
Immunogen Region	1-50 aa
Specificity	Pax-5 Polyclonal Antibody detects endogenous levels of Pax-5 protein.
Immunogen Sequence	



Western blot analysis of lysates from 293 cells, using Pax-5 Antibody. The lane on the right is blocked with the synthesized peptide.



Western blot analysis of various cells using Pax-5 Polyclonal Antibody cells nucleus extracted by Minute TM Cytoplasmic and Nuclear Fractionation kit (SC-003, Inventoriatech, MN, USA).