

## Anti-PARP4 antibody (1151-1200 aa) (STJ94961)

STJ94961

### GENERAL INFORMATION

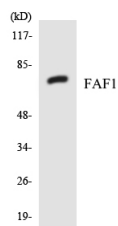
<b>Product Type</b>	Primary antibodies
<b>Short Description</b>	Rabbit polyclonal antibody anti-Protein mono-ADP-ribosyltransferase PARP4 polymerase (1151-1200 aa) is suitable for use in Immunohistochemistry, Immunofluorescence and ELISA research applications.
<b>Applications</b>	IHC/IF/ELISA
<b>Host/Source</b>	Rabbit
<b>Reactivity</b>	Human/Rat/Mouse

### PRODUCT PROPERTIES

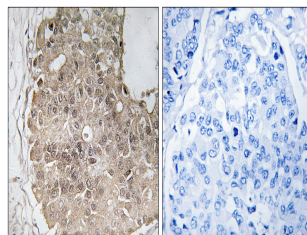
<b>Clonality</b>	Polyclonal
<b>Clone ID</b>	
<b>Concentration</b>	1 mg/mL
<b>Conjugation</b>	Unconjugated
<b>Purification</b>	The antibody was affinity-purified from rabbit antiserum by affinity-chromatography using epitope-specific immunogen.
<b>Dilution</b>	IHC 1:100-1:300
<b>Range</b>	ELISA 1:10000 IF 1:50-200
<b>Formulation</b>	Liquid in PBS containing 50% Glycerol, 0.5% BSA and 0.02% Sodium Azide.
<b>Isotype</b>	IgG
<b>Storage</b>	Store at -20°C for up to 1 year from the date of receipt, and avoid repeat freeze-thaw cycles.
<b>Instruction</b>	

### TARGET INFORMATION

<b>Gene ID</b>	143
<b>Gene Symbol</b>	PARP4
<b>Uniprot ID</b>	PARP4_HUMAN
<b>Immunogen</b>	The antiserum was produced against synthesized peptide derived from the human PARP4 at the amino acid range 1151-1200
<b>Immunogen Region</b>	1151-1200 aa
<b>Specificity</b>	PARP-4 Polyclonal Antibody detects endogenous levels of PARP-4 protein.
<b>Immunogen Sequence</b>	



Western blot analysis of the lysates from HT-29 cells using FAF1 antibody.



Immunohistochemistry analysis of paraffin-embedded human breast carcinoma, using PARP4 Antibody. The picture on the right is blocked with the synthesized peptide.