

Anti-PARP2 antibody (151-200 aa) (STJ94959)

STJ94959

GENERAL INFORMATION

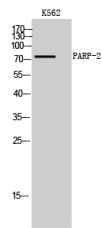
Product Type	Primary antibodies
Short Description	Rabbit polyclonal antibody anti-Poly polymerase 2 ADP-ribosyltransferase 2 (151-200 aa) is suitable for use in Western Blot and ELISA research applications.
Applications	WB/ELISA
Host/Source	Rabbit
Reactivity	Human/Mouse

PRODUCT PROPERTIES

Clonality	Polyclonal
Clone ID	
Concentration	1 mg/mL
Conjugation	Unconjugated
Purification	The antibody was affinity-purified from rabbit antiserum by affinity-chromatography using epitope-specific immunogen.
Dilution Range	WB 1:500-1:2000 ELISA 1:40000
Formulation	Liquid in PBS containing 50% Glycerol, 0.5% BSA and 0.02% Sodium Azide.
Isotype	IgG
Storage	Store at -20°C for up to 1 year from the date of receipt, and avoid repeat freeze-thaw cycles.
Instruction	

TARGET INFORMATION

Gene ID	10038
Gene Symbol	PARP2
Uniprot ID	PARP2_HUMAN
Immunogen	The antiserum was produced against synthesized peptide derived from the human PARP2 at the amino acid range 151-200
Immunogen Region	151-200 aa
Specificity	PARP-2 Polyclonal Antibody detects endogenous levels of PARP-2 protein.
Immunogen Sequence	



Western blot analysis of K562 cells using PARP-2 Polyclonal Antibody. Cells nucleus extracted by Minute TM Cytoplasmic and Nuclear Fractionation kit (SC-003, Inventorbiotech, MN, USA).

This product is suitable for in-vitro studies under the RESEARCH USE ONLY [RUO] licence. This product must not be used as for diagnostic or other medical purposes.
St John's Laboratory Ltd, Knowledge Dock Business Centre, University Way, London, E16 2RD | Tel: 0208 223 3081