

Anti-PAK5/6 antibody (566-615 aa) (STJ94939)

STJ94939

GENERAL INFORMATION

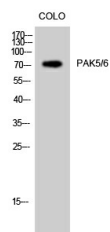
Product Type	Primary antibodies
Short Description	Rabbit polyclonal antibody anti-Serine/threonine-protein kinase PAK 5 and Serine/threonine-protein kinase PAK 6 (566-615 aa) is suitable for use in Western Blot and ELISA research applications.
Applications	WB/ELISA
Host/Source	Rabbit
Reactivity	Human/Mouse

PRODUCT PROPERTIES

Clonality	Polyclonal
Clone ID	
Concentration	1 mg/mL
Conjugation	Unconjugated
Purification	The antibody was affinity-purified from rabbit antiserum by affinity-chromatography using epitope-specific immunogen.
Dilution Range	WB 1:500-1:2000 ELISA 1:40000
Formulation	Liquid in PBS containing 50% Glycerol, 0.5% BSA and 0.02% Sodium Azide.
Isotype	IgG
Storage	Store at -20°C for up to 1 year from the date of receipt, and avoid repeat freeze-thaw cycles.
Instruction	

TARGET INFORMATION

Gene ID	106821730/56924 57144
Gene Symbol	PAK6 PAK5
Uniprot ID	PAK6_HUMAN PAK5_HUMAN
Immunogen	The antiserum was produced against synthesized peptide derived from the human PAK5/6 at the amino acid range 566-615
Immunogen Region	566-615 aa
Specificity	PAK5/6 Polyclonal Antibody detects endogenous levels of PAK5/6 protein.
Immunogen Sequence	



Western blot analysis of COLO cells using PAK5/6 Polyclonal Antibody

This product is suitable for in-vitro studies under the RESEARCH USE ONLY [RUO] licence. This product must not be used as for diagnostic or other medical purposes.
St John's Laboratory Ltd, Knowledge Dock Business Centre, University Way, London, E16 2RD | Tel: 0208 223 3081