

Anti-SERPINB2 antibody (258-307 aa) (STJ94935)

STJ94935

GENERAL INFORMATION

Product Type	Primary antibodies
Short Description	Rabbit polyclonal antibody anti-Plasminogen activator inhibitor 2 (258-307 aa) is suitable for use in Western Blot, Immunohistochemistry, Immunofluorescence and ELISA research applications.
Applications	WB/IHC/IF/ELISA
Host/Source	Rabbit
Reactivity	Human/Rat/Mouse

PRODUCT PROPERTIES

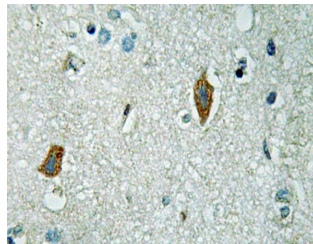
Clonality	Polyclonal
Clone ID	
Concentration	1 mg/mL
Conjugation	Unconjugated
Purification	The antibody was affinity-purified from rabbit antiserum by affinity-chromatography using epitope-specific immunogen.
Dilution Range	WB 1:500-1:2000 IHC 1:100-1:300 ELISA 1:40000 IF 1:50-200
Formulation	Liquid in PBS containing 50% Glycerol, 0.5% BSA and 0.02% Sodium Azide.
Isotype	IgG
Storage	Store at -20°C for up to 1 year from the date of receipt, and avoid repeat freeze-thaw cycles.
Instruction	

TARGET INFORMATION

Gene ID	5055
Gene Symbol	SERPINB2
Uniprot ID	PAI2_HUMAN
Immunogen	The antiserum was produced against synthesized peptide derived from the human PAI-2 at the amino acid range 258-307
Immunogen Region	258-307 aa
Specificity	PAI-2 Polyclonal Antibody detects endogenous levels of PAI-2 protein.
Immunogen Sequence	

-117
-85
-49
PAI-2-
-34
-25

Western blot analysis of lysate from MCF-7 cells, using PAI-2 antibody.



Immunohistochemistry analysis of PAI-2 antibody in paraffin-embedded human brain tissue.

This product is suitable for in-vitro studies under the RESEARCH USE ONLY [RUO] licence. This product must not be used as for diagnostic or other medical purposes.
St John's Laboratory Ltd, Knowledge Dock Business Centre, University Way, London, E16 2RD | Tel: 0208 223 3081