

Anti-SERPINE1 antibody (266-315 aa) (STJ94934)

STJ94934

GENERAL INFORMATION

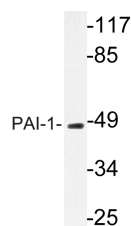
Product Type	Primary antibodies
Short Description	Rabbit polyclonal antibody anti-Plasminogen activator inhibitor 1 (266-315 aa) is suitable for use in Western Blot, Immunohistochemistry, Immunofluorescence and ELISA research applications.
Applications	WB/IHC/IF/ELISA
Host/Source	Rabbit
Reactivity	Human/Mouse/Rat

PRODUCT PROPERTIES

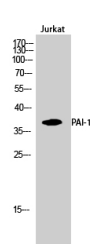
Clonality	Polyclonal
Clone ID	
Concentration	1 mg/mL
Conjugation	Unconjugated
Purification	The antibody was affinity-purified from rabbit antiserum by affinity-chromatography using epitope-specific immunogen.
Dilution Range	WB 1:500-1:2000 IHC 1:100-1:300 ELISA 1:20000 IF 1:50-200
Formulation	Liquid in PBS containing 50% Glycerol, 0.5% BSA and 0.02% Sodium Azide.
Isotype	IgG
Storage	Store at -20°C for up to 1 year from the date of receipt, and avoid repeat freeze-thaw cycles.
Instruction	

TARGET INFORMATION

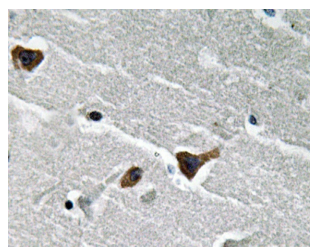
Gene ID	5054
Gene Symbol	SERPINE1
Uniprot ID	PAI1_HUMAN
Immunogen	The antiserum was produced against synthesized peptide derived from the human PAI-1 at the amino acid range 266-315
Immunogen Region	266-315 aa
Specificity	PAI-1 Polyclonal Antibody detects endogenous levels of PAI-1 protein.
Immunogen Sequence	



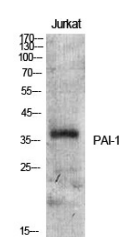
Western blot analysis of lysate from Jurkat cells, using PAI-1 antibody.



Western blot analysis of Jurkat cells using PAI-1 Polyclonal Antibody



Immunohistochemistry analysis of PAI-1 antibody in paraffin-embedded human brain tissue.



Western blot analysis of various cells using PAI-1 Polyclonal Antibody

This product is suitable for in-vitro studies under the RESEARCH USE ONLY [RUO] licence. This product must not be used as for diagnostic or other medical purposes.
St John's Laboratory Ltd, Knowledge Dock Business Centre, University Way, London, E16 2RD | Tel: 0208 223 3081