

Anti-PTAFR antibody (194-243 aa) (STJ94931)

STJ94931

GENERAL INFORMATION

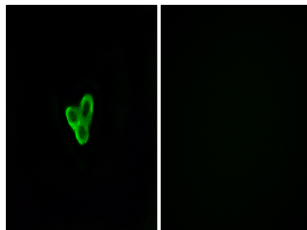
Product Type	Primary antibodies
Short Description	Rabbit polyclonal antibody anti-Platelet-activating factor receptor (194-243 aa) is suitable for use in Immunofluorescence and ELISA research applications.
Applications	IF/ELISA
Host/Source	Rabbit
Reactivity	Human/Mouse/Rat

PRODUCT PROPERTIES

Clonality	Polyclonal
Clone ID	
Concentration	1 mg/mL
Conjugation	Unconjugated
Purification	The antibody was affinity-purified from rabbit antiserum by affinity-chromatography using epitope-specific immunogen.
Dilution Range	IF 1:200-1:1000 ELISA 1:10000
Formulation	Liquid in PBS containing 50% Glycerol, 0.5% BSA and 0.02% Sodium Azide.
Isotype	IgG
Storage	Store at -20°C for up to 1 year from the date of receipt, and avoid repeat freeze-thaw cycles.
Instruction	

TARGET INFORMATION

Gene ID	5724
Gene Symbol	PTAFR
Uniprot ID	PTAFR_HUMAN
Immunogen	The antiserum was produced against synthesized peptide derived from the human PTAFR at the amino acid range 194-243
Immunogen Region	194-243 aa
Specificity	PAF-R Polyclonal Antibody detects endogenous levels of PAF-R protein.
Immunogen Sequence	



Immunofluorescence analysis of LOVO cells, using PTAFR Antibody. The picture on the right is blocked with the synthesized peptide.