

Anti-RPS6KB1 antibody (337-386 aa) (STJ94920)

STJ94920

GENERAL INFORMATION

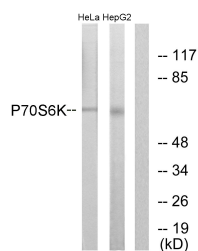
Product Type	Primary antibodies
Short Description	Rabbit polyclonal antibody anti-Ribosomal protein S6 kinase beta-1 (337-386 aa) is suitable for use in Western Blot, Immunohistochemistry, Immunofluorescence and ELISA research applications.
Applications	WB/IHC/IF/ELISA
Host/Source	Rabbit
Reactivity	Human/Mouse/Rat/Pig

PRODUCT PROPERTIES

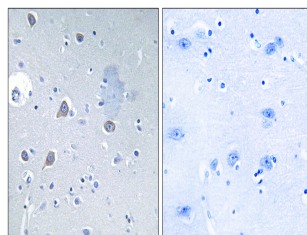
Clonality	Polyclonal
Clone ID	
Concentration	1 mg/mL
Conjugation	Unconjugated
Purification	The antibody was affinity-purified from rabbit antiserum by affinity-chromatography using epitope-specific immunogen.
Dilution Range	WB 1:500-1:2000 IHC 1:100-1:300 IF 1:200-1:1000 ELISA 1:20000
Formulation	Liquid in PBS containing 50% Glycerol, 0.5% BSA and 0.02% Sodium Azide.
Isotype	IgG
Storage Instruction	Store at -20°C for up to 1 year from the date of receipt, and avoid repeat freeze-thaw cycles.

TARGET INFORMATION

Gene ID	6198
Gene Symbol	RPS6KB1
Uniprot ID	KS6B1_HUMAN
Immunogen	The antiserum was produced against synthesized peptide derived from the human p70 S6 Kinase at the amino acid range 337-386
Immunogen Region	337-386 aa
Specificity	p70 S6 kinase Alpha Polyclonal Antibody detects endogenous levels of p70 S6 kinase Alpha protein.
Immunogen Sequence	



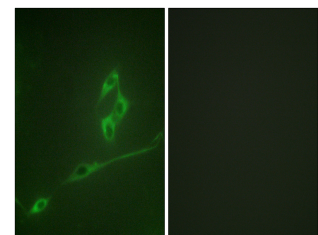
Western blot analysis of lysates from HeLa/HepG2, using p70 S6 Kinase Antibody. The lane on the right is blocked with the synthesized peptide.



Immunohistochemistry analysis of paraffin-embedded human brain tissue, using p70 S6 Kinase Antibody. The picture on the right is blocked with the synthesized peptide.



Western blot analysis of various cells using p70 S6 Kinase Alpha Polyclonal Antibody



Immunofluorescence analysis of NIH/3T3 cells, using p70 S6 Kinase Antibody. The picture on the right is blocked with the synthesized peptide.