

## Anti-DDX5 antibody (565-614 aa) (STJ94913)

STJ94913

### GENERAL INFORMATION

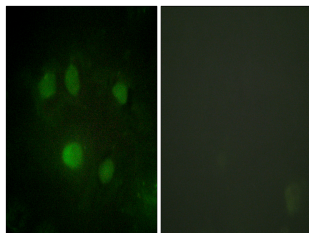
<b>Product Type</b>	Primary antibodies
<b>Short Description</b>	Rabbit polyclonal antibody anti-Probable ATP-dependent RNA helicase DDX5 (565-614 aa) is suitable for use in Western Blot, Immunofluorescence and ELISA research applications.
<b>Applications</b>	WB/IF/ELISA
<b>Host/Source</b>	Rabbit
<b>Reactivity</b>	Human/Mouse/Rat

### PRODUCT PROPERTIES

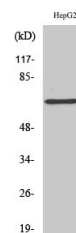
<b>Clonality</b>	Polyclonal
<b>Clone ID</b>	
<b>Concentration</b>	1 mg/mL
<b>Conjugation</b>	Unconjugated
<b>Purification</b>	The antibody was affinity-purified from rabbit antiserum by affinity-chromatography using epitope-specific immunogen.
<b>Dilution Range</b>	WB 1:500-1:2000 IF 1:200-1:1000 ELISA 1:20000
<b>Formulation</b>	Liquid in PBS containing 50% Glycerol, 0.5% BSA and 0.02% Sodium Azide.
<b>Isotype</b>	IgG
<b>Storage Instruction</b>	Store at -20°C for up to 1 year from the date of receipt, and avoid repeat freeze-thaw cycles.

### TARGET INFORMATION

<b>Gene ID</b>	1655
<b>Gene Symbol</b>	DDX5
<b>Uniprot ID</b>	DDX5_HUMAN
<b>Immunogen</b>	The antiserum was produced against synthesized peptide derived from the human DDX5/DEAD-box Protein 5 at the amino acid range 565-614
<b>Immunogen Region</b>	565-614 aa
<b>Specificity</b>	p68 RNA Helicase Polyclonal Antibody detects endogenous levels of p68 RNA Helicase protein.
<b>Immunogen Sequence</b>	



Immunofluorescence analysis of HeLa cells, using DDX5/DEAD-box Protein 5 Antibody. The picture on the right is blocked with the synthesized peptide.



Western blot analysis of various cells using p68 RNA Helicase Polyclonal Antibody cells nucleus extracted by Minute TM Cytoplasmic and Nuclear Fractionation kit (SC-003, Inventibiotec, MN, USA).