

Anti-RPS6KC1 antibody (231-280 aa) (STJ94888)

STJ94888

GENERAL INFORMATION

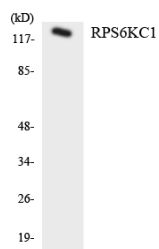
| | |
|--------------------------|---|
| Product Type | Primary antibodies |
| Short Description | Rabbit polyclonal antibody anti-Ribosomal protein S6 kinase delta-1 (231-280 aa) is suitable for use in Western Blot, Immunofluorescence and ELISA research applications. |
| Applications | WB/IF/ELISA |
| Host/Source | Rabbit |
| Reactivity | Human/Mouse |

PRODUCT PROPERTIES

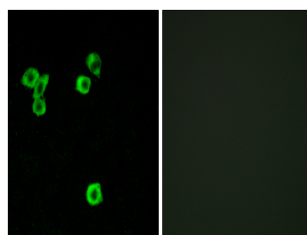
| | |
|----------------------------|---|
| Clonality | Polyclonal |
| Clone ID | |
| Concentration | 1 mg/mL |
| Conjugation | Unconjugated |
| Purification | The antibody was affinity-purified from rabbit antiserum by affinity-chromatography using epitope-specific immunogen. |
| Dilution Range | WB 1:500-1:2000 IF 1:200-1:1000 ELISA 1:20000 |
| Formulation | Liquid in PBS containing 50% Glycerol, 0.5% BSA and 0.02% Sodium Azide. |
| Isotype | IgG |
| Storage Instruction | Store at -20°C for up to 1 year from the date of receipt, and avoid repeat freeze-thaw cycles. |

TARGET INFORMATION

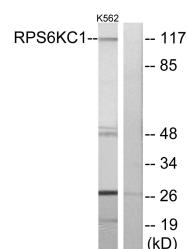
| | |
|---------------------------|---|
| Gene ID | 26750 |
| Gene Symbol | RPS6KC1 |
| Uniprot ID | KS6C1_HUMAN |
| Immunogen | The antiserum was produced against synthesized peptide derived from the human RPS6KC1 at the amino acid range 231-280 |
| Immunogen Region | 231-280 aa |
| Specificity | p52 S6 kinase Polyclonal Antibody detects endogenous levels of p52 S6 kinase protein. |
| Immunogen Sequence | |



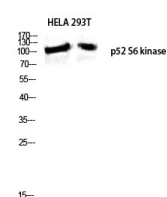
Western blot analysis of the lysates from HT-29 cells using RPS6KC1 antibody.



Immunofluorescence analysis of LOVO cells, using RPS6KC1 Antibody. The picture on the right is blocked with the synthesized peptide.



Western blot analysis of lysates from K562 cells, using RPS6KC1 Antibody. The lane on the right is blocked with the synthesized peptide.



Western blot analysis of HELA 293T lysis using p52 S6 kinase antibody. Antibody was diluted at 1:500