

## Anti-CDK5R1 antibody (11-60 aa) (STJ94875)

STJ94875

### GENERAL INFORMATION

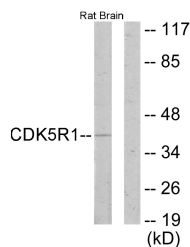
<b>Product Type</b>	Primary antibodies
<b>Short Description</b>	Rabbit polyclonal antibody anti-Cyclin-dependent kinase 5 activator 1 (11-60 aa) is suitable for use in Western Blot, Immunohistochemistry, Immunofluorescence and ELISA research applications.
<b>Applications</b>	WB/IHC/IF/ELISA
<b>Host/Source</b>	Rabbit
<b>Reactivity</b>	Human/Mouse/Rat

### PRODUCT PROPERTIES

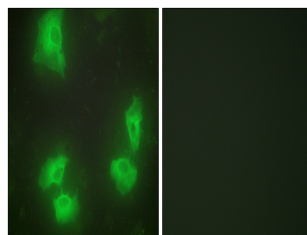
<b>Clonality</b>	Polyclonal
<b>Clone ID</b>	
<b>Concentration</b>	1 mg/mL
<b>Conjugation</b>	Unconjugated
<b>Purification</b>	The antibody was affinity-purified from rabbit antiserum by affinity-chromatography using epitope-specific immunogen.
<b>Dilution Range</b>	WB 1:500-1:2000 IHC 1:100-1:300 IF 1:200-1:1000 ELISA 1:20000
<b>Formulation</b>	Liquid in PBS containing 50% Glycerol, 0.5% BSA and 0.02% Sodium Azide.
<b>Isotype</b>	IgG
<b>Storage Instruction</b>	Store at -20°C for up to 1 year from the date of receipt, and avoid repeat freeze-thaw cycles.

### TARGET INFORMATION

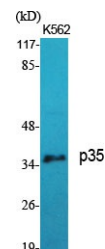
<b>Gene ID</b>	8851
<b>Gene Symbol</b>	CDK5R1
<b>Uniprot ID</b>	CD5R1_HUMAN
<b>Immunogen</b>	The antiserum was produced against synthesized peptide derived from the human CDK5R1 at the amino acid range 11-60
<b>Immunogen Region</b>	11-60 aa
<b>Specificity</b>	p35 Polyclonal Antibody detects endogenous levels of p35 protein.
<b>Immunogen Sequence</b>	



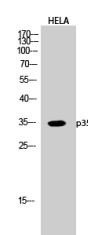
Western blot analysis of lysates from rat brain cells, using CDK5R1 Antibody. The lane on the right is blocked with the synthesized peptide.



Immunofluorescence analysis of HeLa cells, using CDK5R1 Antibody. The picture on the right is blocked with the synthesized peptide.



Western blot analysis of various cells using p35 Polyclonal Antibody diluted at 1/4 1000



Western blot analysis of HELA cells using p35 Polyclonal Antibody diluted at 1/4 1000