

Anti-P2RY4 antibody (159-208 aa) (STJ94871)

STJ94871

GENERAL INFORMATION

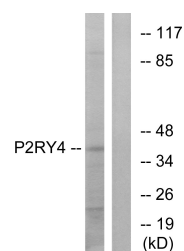
Product Type	Primary antibodies
Short Description	Rabbit polyclonal antibody anti-P2Y purinoceptor 4 (159-208 aa) is suitable for use in Western Blot, Immunofluorescence and ELISA research applications.
Applications	WB/IF/ELISA
Host/Source	Rabbit
Reactivity	Human/Mouse/Rat

PRODUCT PROPERTIES

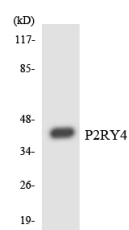
Clonality	Polyclonal
Clone ID	
Concentration	1 mg/mL
Conjugation	Unconjugated
Purification	The antibody was affinity-purified from rabbit antiserum by affinity-chromatography using epitope-specific immunogen.
Dilution Range	WB 1:500-1:2000 IF 1:200-1:1000 ELISA 1:10000
Formulation	Liquid in PBS containing 50% Glycerol, 0.5% BSA and 0.02% Sodium Azide.
Isotype	IgG
Storage	Store at -20°C for up to 1 year from the date of receipt, and avoid repeat freeze-thaw cycles.
Instruction	

TARGET INFORMATION

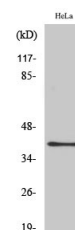
Gene ID	5030
Gene Symbol	P2RY4
Uniprot ID	P2RY4_HUMAN
Immunogen	The antiserum was produced against synthesized peptide derived from the human P2RY4 at the amino acid range 159-208
Immunogen Region	159-208 aa
Specificity	P2Y4 Polyclonal Antibody detects endogenous levels of P2Y4 protein.
Immunogen Sequence	



Western blot analysis of lysates from HeLa cells, using P2RY4 Antibody. The lane on the right is blocked with the synthesized peptide.



Western blot analysis of the lysates from COLO205 cells using P2RY4 antibody.



Western blot analysis of various cells using P2Y4 Polyclonal Antibody diluted at 1:1000.