

Anti-CDKN1A antibody (111-160 aa) (STJ94862)

STJ94862

GENERAL INFORMATION

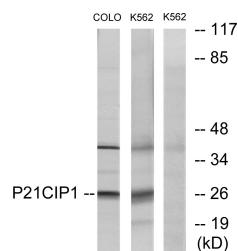
Product Type	Primary antibodies
Short Description	Rabbit polyclonal antibody anti-Cyclin-dependent kinase inhibitor 1 (111-160 aa) is suitable for use in Immunofluorescence, Western Blot, Immunohistochemistry and ELISA research applications.
Applications	IF/WB/IHC/ELISA
Host/Source	Rabbit
Reactivity	Human/Mouse/Rat

PRODUCT PROPERTIES

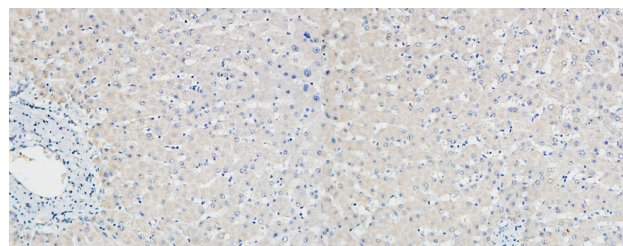
Clonality	Polyclonal
Clone ID	
Concentration	1 mg/mL
Conjugation	Unconjugated
Purification	The antibody was affinity-purified from rabbit antiserum by affinity-chromatography using epitope-specific immunogen.
Dilution Range	IF 1:50-200 WB 1:500-1:2000 ELISA 1:20000
Formulation	Liquid in PBS containing 50% Glycerol, 0.5% BSA and 0.02% Sodium Azide.
Isotype	IgG
Storage Instruction	Store at -20°C for up to 1 year from the date of receipt, and avoid repeat freeze-thaw cycles.

TARGET INFORMATION

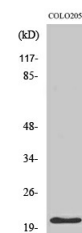
Gene ID	1026
Gene Symbol	CDKN1A
Uniprot ID	CDN1A_HUMAN
Immunogen	The antiserum was produced against synthesized peptide derived from the human p21 Cip1 at the amino acid range 111-160
Immunogen Region	111-160 aa
Specificity	p21 Polyclonal Antibody detects endogenous levels of p21 protein.
Immunogen Sequence	



Western blot analysis of lysates from COLO and K562 cells, treated with EGF, using p21 Cip1 Antibody. The lane on the right is blocked with the synthesized peptide.



Immunohistochemical analysis of paraffin-embedded Human Right liver. 1, Antibody was diluted at 1:100 (4Å°C overnight). 2, High-pressure and temperature EDTA, pH8.0 was used for antigen retrieval. 3, Secondary antibody was diluted at 1:200 (room temperature, 30min).



Western blot analysis of COLO205 cells using p21 Polyclonal Antibody