

Anti-ARHGEF17 antibody (431-480 aa) (STJ94859)

STJ94859

GENERAL INFORMATION

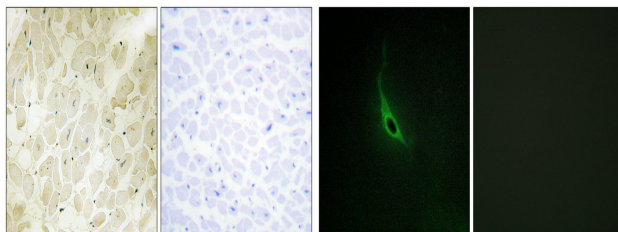
Product Type	Primary antibodies
Short Description	Rabbit polyclonal antibody anti-Rho guanine nucleotide exchange factor 17 (431-480 aa) is suitable for use in Immunohistochemistry, Immunofluorescence and ELISA research applications.
Applications	IHC/IF/ELISA
Host/Source	Rabbit
Reactivity	Human/Mouse

PRODUCT PROPERTIES

Clonality	Polyclonal
Clone ID	
Concentration	1 mg/mL
Conjugation	Unconjugated
Purification	The antibody was affinity-purified from rabbit antiserum by affinity-chromatography using epitope-specific immunogen.
Dilution Range	IHC 1:100-1:300 IF 1:200-1:1000 ELISA 1:5000
Formulation	Liquid in PBS containing 50% Glycerol, 0.5% BSA and 0.02% Sodium Azide.
Isotype	IgG
Storage Instruction	Store at -20°C for up to 1 year from the date of receipt, and avoid repeat freeze-thaw cycles.

TARGET INFORMATION

Gene ID	9828
Gene Symbol	ARHGEF17
Uniprot ID	ARHGH_HUMAN
Immunogen	The antiserum was produced against synthesized peptide derived from the human ARHGEF17 at the amino acid range 431-480
Immunogen Region	431-480 aa
Specificity	p164-RhoGEF Polyclonal Antibody detects endogenous levels of p164-RhoGEF protein.
Immunogen Sequence	



Immunohistochemical analysis of paraffin-embedded human heart. 1. Antibody was diluted at 1:200 (4°C overnight). 2. TRIS-EDTA of pH8.0 was used for antigen retrieval. 3. Secondary antibody was diluted at 1:200 (room temperature, 30min). The picture on the right is blocked with the synthesized peptide.

Immunofluorescence analysis of HepG2 cells, using CARD6 Antibody diluted at 1:50. The picture on the right is blocked with the synthesized peptide.

This product is suitable for in-vitro studies under the RESEARCH USE ONLY [RUO] licence. This product must not be used as for diagnostic or other medical purposes.
St John's Laboratory Ltd, Knowledge Dock Business Centre, University Way, London, E16 2RD | Tel: 0208 223 3081