

Anti-OXSR1 antibody (272-321 aa) (STJ94847)

STJ94847

GENERAL INFORMATION

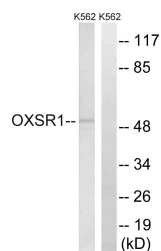
Product Type	Primary antibodies
Short Description	Rabbit polyclonal antibody anti-Serine/threonine-protein kinase OXSR1 (272-321 aa) is suitable for use in Western Blot and ELISA research applications.
Applications	WB/ELISA
Host/Source	Rabbit
Reactivity	Human/Mouse

PRODUCT PROPERTIES

Clonality	Polyclonal
Clone ID	
Concentration	1 mg/mL
Conjugation	Unconjugated
Purification	The antibody was affinity-purified from rabbit antiserum by affinity-chromatography using epitope-specific immunogen.
Dilution Range	WB 1:500-1:2000 ELISA 1:40000
Formulation	Liquid in PBS containing 50% Glycerol, 0.5% BSA and 0.02% Sodium Azide.
Isotype	IgG
Storage	Store at -20°C for up to 1 year from the date of receipt, and avoid repeat freeze-thaw cycles.
Instruction	

TARGET INFORMATION

Gene ID	9943
Gene Symbol	OXSR1
Uniprot ID	OXSR1_HUMAN
Immunogen	The antiserum was produced against synthesized peptide derived from the human OXSR1 at the amino acid range 272-321
Immunogen Region	272-321 aa
Specificity	OXSR1 Polyclonal Antibody detects endogenous levels of OXSR1 protein.
Immunogen Sequence	



Western blot analysis of lysates from K562 cells, using OXSR1 Antibody. The lane on the right is blocked with the synthesized peptide.