

Anti-YOD1 antibody (116-165 aa) (STJ94841)

STJ94841

GENERAL INFORMATION

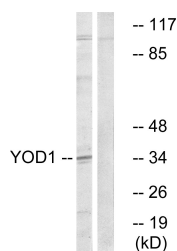
Product Type	Primary antibodies
Short Description	Rabbit polyclonal antibody anti-Ubiquitin thioesterase OTU1 (116-165 aa) is suitable for use in Western Blot and ELISA research applications.
Applications	WB/ELISA
Host/Source	Rabbit
Reactivity	Human/Rat/Mouse

PRODUCT PROPERTIES

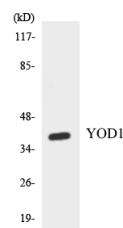
Clonality	Polyclonal
Clone ID	
Concentration	1 mg/mL
Conjugation	Unconjugated
Purification	The antibody was affinity-purified from rabbit antiserum by affinity-chromatography using epitope-specific immunogen.
Dilution Range	WB 1:500-1:2000 ELISA 1:10000
Formulation	Liquid in PBS containing 50% Glycerol, 0.5% BSA and 0.02% Sodium Azide.
Isotype	IgG
Storage Instruction	Store at -20°C for up to 1 year from the date of receipt, and avoid repeat freeze-thaw cycles.

TARGET INFORMATION

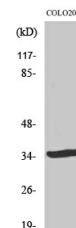
Gene ID	55432
Gene Symbol	YOD1
Uniprot ID	OTU1_HUMAN
Immunogen	The antiserum was produced against synthesized peptide derived from the human YOD1 at the amino acid range 116-165
Immunogen Region	116-165 aa
Specificity	OTUD2 Polyclonal Antibody detects endogenous levels of OTUD2 protein.
Immunogen Sequence	



Western blot analysis of lysates from COLO cells, using YOD1 Antibody. The lane on the right is blocked with the synthesized peptide.



Western blot analysis of the lysates from HT-29 cells using YOD1 antibody.



Western blot analysis of various cells using OTUD2 Polyclonal Antibody.