

Anti-HCRTR1 antibody (298-347 aa) (STJ94837)

STJ94837

GENERAL INFORMATION

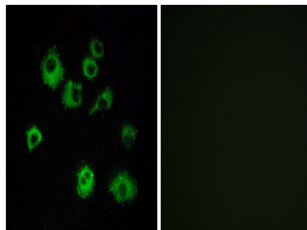
| | |
|--------------------------|---|
| Product Type | Primary antibodies |
| Short Description | Rabbit polyclonal antibody anti-Orexin/Hypocretin receptor type 1 (298-347 aa) is suitable for use in Immunofluorescence and ELISA research applications. |
| Applications | IF/ELISA |
| Host/Source | Rabbit |
| Reactivity | Human/Mouse/Rat |

PRODUCT PROPERTIES

| | |
|-----------------------|---|
| Clonality | Polyclonal |
| Clone ID | |
| Concentration | 1 mg/mL |
| Conjugation | Unconjugated |
| Purification | The antibody was affinity-purified from rabbit antiserum by affinity-chromatography using epitope-specific immunogen. |
| Dilution Range | IF 1:200-1:1000 ELISA 1:20000 |
| Formulation | Liquid in PBS containing 50% Glycerol, 0.5% BSA and 0.02% Sodium Azide. |
| Isotype | IgG |
| Storage | Store at -20°C for up to 1 year from the date of receipt, and avoid repeat freeze-thaw cycles. |
| Instruction | |

TARGET INFORMATION

| | |
|---------------------------|--|
| Gene ID | 3061 |
| Gene Symbol | HCRTR1 |
| Uniprot ID | OX1R_HUMAN |
| Immunogen | The antiserum was produced against synthesized peptide derived from the human HCRTR1 at the amino acid range 298-347 |
| Immunogen Region | 298-347 aa |
| Specificity | Orexin R-1 Polyclonal Antibody detects endogenous levels of Orexin R-1 protein. |
| Immunogen Sequence | |



Immunofluorescence analysis of MCF7 cells, using HCRTR1 Antibody. The picture on the right is blocked with the synthesized peptide.

This product is suitable for in-vitro studies under the RESEARCH USE ONLY [RUO] licence. This product must not be used as for diagnostic or other medical purposes.
St John's Laboratory Ltd, Knowledge Dock Business Centre, University Way, London, E16 2RD | Tel: 0208 223 3081