

## Anti-OR812 antibody (55-104) (STJ94812)

STJ94812

### GENERAL INFORMATION

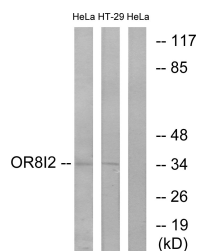
<b>Product Type</b>	Primary antibodies
<b>Short Description</b>	Rabbit polyclonal antibody anti-Olfactory receptor 812 (55-104) is suitable for use in Western Blot, Immunofluorescence and ELISA research applications.
<b>Applications</b>	WB/IF/ELISA
<b>Host/Source</b>	Rabbit
<b>Reactivity</b>	Human/Rat/Mouse

### PRODUCT PROPERTIES

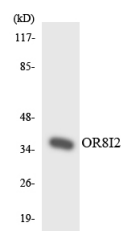
<b>Clonality</b>	Polyclonal
<b>Clone ID</b>	
<b>Concentration</b>	1 mg/mL
<b>Conjugation</b>	Unconjugated
<b>Purification</b>	The antibody was affinity-purified from rabbit antiserum by affinity-chromatography using epitope-specific immunogen.
<b>Dilution Range</b>	WB 1:500-1:2000 IF 1:200-1:1000 ELISA 1:5000
<b>Formulation</b>	Liquid in PBS containing 50% Glycerol, 0.5% BSA and 0.02% Sodium Azide.
<b>Isotype</b>	IgG
<b>Storage Instruction</b>	Store at -20°C for up to 1 year from the date of receipt, and avoid repeat freeze-thaw cycles.

### TARGET INFORMATION

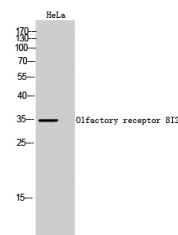
<b>Gene ID</b>	120586
<b>Gene Symbol</b>	OR812
<b>Uniprot ID</b>	OR812_HUMAN
<b>Immunogen</b>	The antiserum was produced against synthesized peptide derived from human OR812. AA range:55-104
<b>Immunogen Region</b>	55-104
<b>Specificity</b>	Olfactory receptor 812 Polyclonal Antibody detects endogenous levels of Olfactory receptor 812 protein.
<b>Immunogen Sequence</b>	



Western blot analysis of lysates from HeLa and HT-29 cells, using OR812 Antibody. The lane on the right is blocked with the synthesized peptide.



Western blot analysis of the lysates from HeLa cells using OR812 antibody.



Western blot analysis of HeLa cells using Olfactory receptor 812 Polyclonal Antibody